



**COMMERCIAL  
HARDWARE**  
BY  **BLACK & DECKER**

## *Table of Contents*

### *Multiple Applications*



### *About Us*

K2 Commercial Hardware by Black & Decker offers the finest in security, quality, styling and customer service to designers, architects and builders.

The K2 product line includes locksets, auxiliary deadbolts, exit devices and door closers to meet all your commercial hardware needs.

K2 has one goal in mind – to be known as the company that is easy to do business with. K2's industry-leading frontline and support teams will make doing business easy in every respect – from products that make K2 the logical choice for architects, designers and builders, to a support system staffed by people who care.

### *Investment in Quality*



### *Table of Contents*

Grade 1 Cylindrical Levers	3
Grade 2 Cylindrical Levers	4
Interconnected Levers	5
Grade 2 Tubular Levers	6
Auxiliary Locks	7,8
Exit Devices	9-13
Door Closers	14-15

### Applications

The heavy duty QCL100 series cylindrical levers are designed for institutional, commercial uses such as educational, health care and industrial facilities where a long-lasting, highly durable product is required. These levers will deliver the operational requirements set forth while withstanding the physical abuse associated with the applied environment.

### Performance Features

- Tested to exceed 1,000,000 cycles, exceeding the 800,000 required to meet Grade 1 certification.
- Standard Clutching Mechanism provides resistance to damage caused by physical force.
- Thru-Bolted design and heavy-duty spring tension provides longer performance life and prevents lever sag.
- Concealed mounting screws.
- Compartmentalized packaging allows for quick and easy installation.

### Certifications



- ANSI/BHMA A156.2 Series Grade 1
- ANSI A117.1 Accessibility Code (ADA Compliant)
- UL/cUL Listed (3-hours) for "A" Label Single Door applications (4' x 8') (1.219mt x 2.438mt)
- UL10C / UBC 7-2 (1997) Positive Pressure Rated
- UL10B Pressure Rated
- California State Reference Code (formerly Title 19 – Fire Marshall)

### Product Specifications

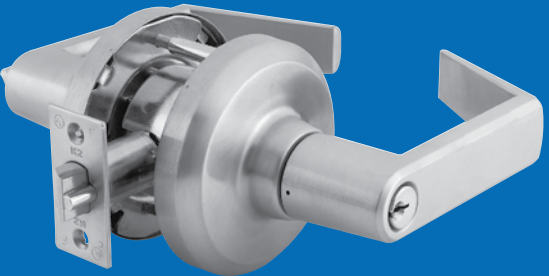
- Handing – All QCL100 series lever locksets are non-handed.
- Door Thickness – 1 3/8" – 2" (35mm-51mm) standard.
- Backset – 2 3/4" (70mm) Square standard.  
2 3/8" & 5" (60mm, 127mm) available.
- Exposed Trim – Pressure cast zinc, plated to match finish designation.
- Strike – ANSI Strike 1 1/4" x 4 7/8" (32mm x 124mm) standard. Other strike options also available.
- Door Prep – 2 1/8" (54mm) Diameter cross bore.
- Latchbolt – Keyed/Exterior 1/2" (12.7mm) Steel Throw ; Interior 1/2" (12.7mm) spring latch
- Latch Faceplate 1 1/8" x 2 1/4" (29mm x 57mm) Standard
- Single dummy is surface mounted
- Electrification options available

### Keying

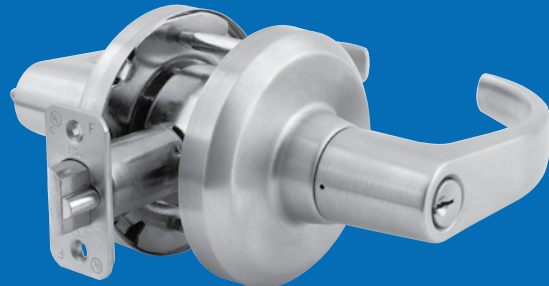
- 6-Pin Brass Cylinders. Many keying options available from our factory to include, but not limited to, master keying, grandmaster keying and construction keying. Small Format Interchangeable Core cylinder also available.
- 2 Keys per lockset
- Offered with the following keyway options: KW-Kwikset, WE-Weiser, SC-Schlage, GA-Yale, LA-Sargent, BF-Best "F" & LC-Less Cylinder.

### Warranty

Lifetime Mechanical & 3 year finish\*  
 \*(613/US10B carries no finish warranty)



Sierra (SIE)



Summit (SUM)

### Functions

ANSI	K2	Description
---	QCL120	Single Dummy
F75	QCL130	Passage
F111	QCL135	Communicating
F76	QCL140	Privacy
F109	QCL150	Entry/Office
F109	QCL151	Entry/Office SFIC
F84	QCL160	Classroom
F84	QCL161	Classroom SFIC
F86	QCL170	Storeroom
F86	QCL171	Storeroom SFIC

### Finishes

BHMA	US	Description
605	US3	Bright Brass
613	US10B	Oil Rubbed Bronze
619	US15	Satin Nickel
625	US26	Bright Chrome
626	US26D	Satin Chrome

### Applications

The standard duty QCL200 series cylindrical levers are designed for multi-family, tenant improvement uses such as apartment complexes, retail/store-front, office buildings, religious and government facilities and hotels/motels where a stylish yet durable product is required.

### Performance Features

- Tested to significantly exceed the 400,000 cycles required to meet Grade 2 certification.
- Standard clutching mechanism provides resistance to damage caused by physical force.
- Thru-bolted design and heavy-duty spring tension provides longer performance life and prevents lever sag.
- Concealed mounting screws.
- Compartmentalized packaging allows for quick and easy installation.

### Certifications



- ANSI/BHMA A156.2 Series Grade 2
- ANSI A117.1 Accessibility Code (ADA Compliant)
- UL/cUL listed (3-hours) for "A" label single door applications (4' x 8') (1.219mt x 2.438mt)
- UL10C / UBC 7-2 (1997) Positive Pressure Rated
- UL10B Pressure Rated
- California State Reference Code (formerly Title 19 – Fire Marshall)

### Product Specifications

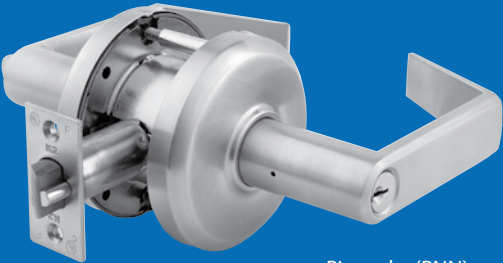
- Handing – All QCL200 series lever locksets are non-handed.
- Door Thickness – 1 3/8" – 2" (35mm-51mm) standard.
- Backset – 2 3/4" (70mm) standard.  
2 3/8", 3 3/4" & 5" (60mm, 95mm, 127mm) available.
- Exposed Trim – Pressure cast zinc plated to match finish designation.
- Strike – ANSI strike 1 1/4" x 4 7/8" (32mm x 124mm) standard. Other strike options also available
- Latchbolt – Keyed/Exterior 1/2" (13mm) steel throw; Interior 1/2" (12mm) spring latch;
- Latch Faceplate 1 1/8" x 2 1/4" (29mm x 57mm)
- Door Prep – 2 1/8" (54mm) diameter cross bore.

### Keying

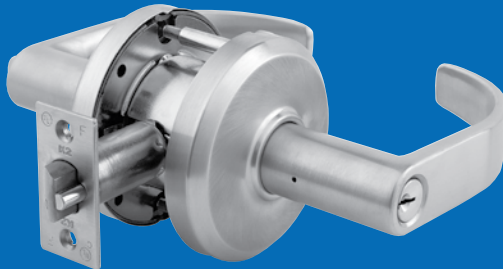
- 6-pin brass cylinders. Many keying options available from our factory to include, but not limited to, master keying, grandmaster keying and construction keying. Small Format Interchangeable Core cylinder also available.
- 2 Keys per lockset
- Offered with the following keyway options: KW-Kwikset, WE-Weiser, SC-Schlage, GA-Yale, LA-Sargent, BF-Best "F" & LC-Less Cylinder.

### Warranty

Lifetime Mechanical & 3 year finish\*  
 \*(613/US10B carries no finish warranty)



Pinnacle (PNN)



Pearce (PEA)

### Functions

ANSI	K2	Description
---	QCL220	Single Dummy
F75	QCL230	Passage
F111	QCL235	Communicating
F76	QCL240	Privacy
F109	QCL250	Entry/Office
F109	QCL251	Entry Office SFIC
F84	QCL260	Classroom
F84	QCL261	Classroom SFIC
F86	QCL270	Storeroom
F86	QCL271	Storeroom SFIC

### Finishes

BHMA	US	Description
605	US3	Bright Brass
613	US10B	Oil Rubbed Bronze
619	US15	Satin Nickel
625	US26	Bright Chrome
626	US26D	Satin Chrome

## Applications

The QCI200 series interconnected levers are designed for multifamily, assisted living, commercial & mixed use applications where single motion egress is required. These leversets deliver premium performance and are designed to withstand the physical abuses of the applied environment.

## Performance Features

- Tested to exceed 400,000 cycles for Grade 2 certification.
- Single motion egress provides easy emergency exit.
- Full 1" (25mm) throwbolt with saw resistant hardened steel roller pin.
- Anti-drill design deadbolt– two (2) ball bearings inserted to prevent drill attacks.
- ADA thumbturn.
- Tapered latchbolt to address warped door concerns.

## Certifications

- ANSI/BHMA A156.12 - 1999 Grade 2
- UL/cUL listed (3-hours) for "A" label single door applications (4'x 8') (1.219m x 2.438m)
- UL10C / UBC 7-2 (1997) Positive Pressure Rated
- UL10B Pressure Rated
- ADA Compliant ANSI A117.1 Accessibility Code

## Product Specifications

- Door Range – 1 3⁄8" - 1 3⁄4" (35mm - 44.5mm)
- 4" Center to Center
- Backset – 2 3⁄4" (70mm) standard. 2 3⁄8" (60mm) available.
- Exposed Trim – Wrought brass or bronze with cast zinc lever.
- Strikes – "T" strike 1 1⁄8" x 2 3⁄4" standard for lever, deadbolt strike 1 1⁄8" x 2 3⁄4" standard. Other strike options also available.
- Latchbolt – Keyed 1⁄2"(13mm) Steel Throw with auxillary latch, passage 1⁄2" (13mm) spring latch.
- Handing – All QCI200 locksets are non-handed.
- Standard door prep: 2 1⁄8" Cross Bore (54mm)
- Latch Hole: 1" Diameter Edge Bore
- Rose Diameter: 2 1⁄2" (63mm)
- Inside Escutcheon 3" x 8" (76mm x 203mm);  
Optional Exterior Escutcheon 3 1⁄4" x 8" (82.5mm x 203mm)
- Tapered latchbolt to address warped door concerns.

## Keying

- 6-pin brass cylinders. Many keying options available from our factory to include, but not limited to, master keying, grandmaster keying and construction keying. Small Format Interchangeable Core cylinder also available.
- 2 Keys per lockset
- Offered with the following keyway options: KW-Kwikset, WE-Weiser, SC-Schlage, GA-Yale, LA-Sargent, BF-Best "F" & LC-Less Cylinder.

## Warranty

Lifetime Mechanical & 3 year finish\*  
 \*(613/US10B carries no finish warranty)



Pinnacle - Single Locking



Pearce - Double Locking

## Functions

ANSI	K2	Description
F95	QCI230	Single Locking (Passage Lever)
F95	QCI231	Single Locking SFIC (Passage Lever)
F97	QCI250	Double Locking (Entry Lever)
F97	QCI251	Double Locking SFIC (Entry Lever)

## Finishes

BHMA	US	Description
605	US3	Bright Brass
613	US10B	Oil Rubbed Bronze
619	US15	Satin Nickel
626	US26D	Satin Chrome

## Applications

The standard duty QTL200 series tubular levers are designed for multi-family, tenant improvement uses such as apartment complexes, retail/storefront, office buildings, religious and government facilities and hotels/motels where a stylish yet durable product is required.

## Performance Features

- Tested to significantly exceed the 400,000 cycles required to meet Grade 2 certification.
- Heavy-duty torsion springs provide longer performance life and prevents lever sag.
- Concealed mounting screws.
- "Anti-Lockout" feature. The entry function will have a free interior. If the door is locked from the inside, it will unlock with the push of the interior side of the lever only or the turn of the button.
- 1⁄2"(13mm) latch bolt made of stainless steel black powder metallurgy for enhanced durability and strength.

## Certifications



- ANSI/BHMA A156.2 Series Grade 2
- ANSI A117.1 Accessibility Code (ADA Compliant)
- UL/cUL listed (3-hours) for "A" label single door applications (4' x 8') (1.219mt x 2.438mt)
- UL10C / UBC 7-2 (1997) Positive Pressure Rated
- UL10B Pressure Rated
- California State Reference Code (formerly Title 19 – Fire Marshall)

## Product Specifications

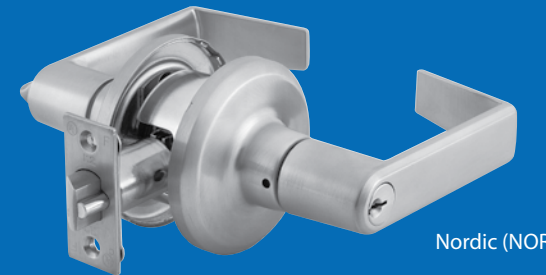
- Handing – All QTL200 series lever locksets are non-handed.
- Door Range – 1 3⁄8" - 1 3⁄4" (35mm-45mm) standard. Consult factory for special door ranges.
- Backset – Universal backset standard, will fit either 2 3⁄8" or 2 3⁄4" backsets (60mm - 70mm).
- Exposed Trim – Pressure cast zinc plated to match finish designation.
- Strike – Full-lip strike standard (57mm x 44.4mm). Other strike options also available.
- Latchbolt - 1⁄2" (13mm) steel throw.
- Latch Faceplate - 1" x 2 1⁄4" (25.4mm x 57mm).

## Keying

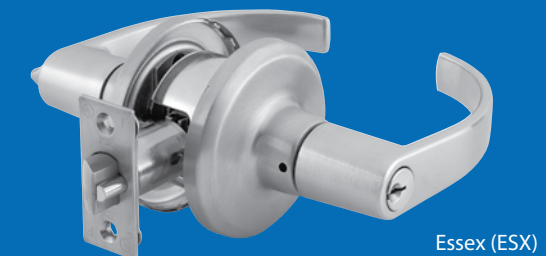
- 6-pin brass cylinders. Many keying options available from our factory to include, but not limited to, master keying, grandmaster keying and construction keying. Small Format Interchangeable Core cylinder also available.
- 2 Keys per lockset
- Offered with the following keyway options: KW-Kwikset, WE-Weiser, SC-Schlage, GA-Yale, LA-Sargent, BF-Best "F" & LC-Less Cylinder.

## Warranty

Lifetime Mechanical & 3 year finish\*  
 \*(613/US10B carries no finish warranty)



Nordic (NOR)



Essex (ESX)

## Functions

ANSI	K2	Description
F75	QTL230	Passage
F76	QTL240	Privacy
F82	QTL250	Entry/Office
F82	QTL251	Entry/Office SFIC
F84	QTL260	Classroom
F84	QTL261	Classroom SFIC
F86	QTL270	Storeroom
F86	QTL271	Storeroom SFIC
---	QTL220	Single Dummy

## Finishes

BHMA	US	Description
605	US3	Bright Brass
613	US10B	Oil Rubbed Bronze
619	US15	Satin Nickel
625	US26	Bright Chrome
626	US26D	Satin Chrome



### Applications

The heavy duty QDB100 series deadbolts are designed for institutional, commercial uses such as educational, health care and industrial facilities where a long-lasting, highly durable product is required. These deadlocks will deliver the operational requirements set forth while withstanding the physical abuse associated with the applied environment.

### Performance Features

- Tested to exceed 1,000,000 cycles, exceeding the 250,000 required to meet Grade 1 certification.
- Solid forged housing provides enhanced strength and durability.
- Full 1" (25.4mm) throwbolt with saw resistant hardened steel roller pin.
- Anti-drill design – two (2) ball bearings inserted to prevent drill attacks.
- ADA thumbturn.
- Compartmentalized packaging allows for quick and easy installation.

### Certifications



- ANSI/BHMA A156.5 Grade 1
- UL/cUL listed (3-hours) for "A" label single door applications (4' x 8') (1.219m x 2.438m)
- UL10C / UBC 7-2 (1997) Positive Pressure Rated
- UL10B Pressure Rated

### Product Specifications

- Door Range – 1½" – 2" (40mm-51mm) standard. Consult factory for special door ranges.
- Backset – 2¾" (70mm) standard. 2⅝" (60mm) available.
- Exposed Trim – Solid forged brass, plated to match finish designation.
- Strike – Standard deadbolt strike 1¼" x 2¾" (32 mm x 70 mm). Other strike options also available.
- Latchbolt – Full 1" (25.4mm) Throw with hardened steel roller; Faceplate – 1½" x 2¼" (29mm x 57mm).

### Keying

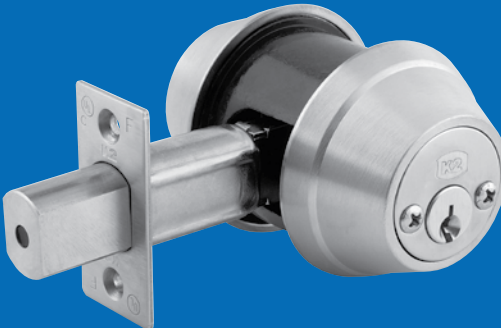
- 6-pin brass cylinders. Many keying options available from our factory to include, but not limited to, master keying, grandmaster keying and construction keying. Small Format Interchangeable Core cylinder also available.
- 2 Keys per lockset
- Offered with the following keyway options: KW-Kwikset, WE-Weiser, SC-Schlage, GA-Yale, LA-Sargent, BF-Best "F" & LC-Less Cylinder.

### Warranty

Lifetime Mechanical & 3 year finish\*  
 \*(613/US10B carries no finish warranty)



Single Cylinder



Double Cylinder

### Functions

ANSI	K2	Description
E0151	QDB180	Single Cylinder
E0151	QDB181	Single Cylinder SFIC
E0141	QDB182	Double Cylinder
E0141	QDB183	Double Cylinder SFIC

### Finishes

BHMA	US	Description
605	US3	Bright Brass
613	US10B	Oil Rubbed Bronze
619	US15	Satin Nickel
625	US26	Bright Chrome
626	US26D	Satin Chrome

### Applications

The standard duty QDB200 series deadlocks are designed for multi-family, assisted living, tenant improvement uses such as apartment complexes, retail/store front, office buildings, religious and government facilities and hotels/motels where a stylish yet durable product is required.

### Performance Features

- Tested to significantly exceed the 150,000 cycles required to meet Grade 2 certification.
- Full 1" (25.4mm) Throwbolt with saw resistant hardened steel roller pin.
- Free-Spinning cylinder collar prevents against wrench attacks.
- Anti-Drill Design – Two (2) ball bearings inserted to prevent drill attacks.
- ADA thumbturn.
- Compartmentalized packaging allows for quick and easy installation.

### Certifications



- ANSI/BHMA A156.5 Grade 2.
- UL/cUL Listed (3-hours) for "A" Label Single Door applications (4' x 8') (1.219mt x 2.438mt).
- UL10C / UBC 7-2 (1997) Positive Pressure Rated.
- UL10B Pressure Rated.
- ANSI A117.1 Accessibility Code (ADA Compliant).
- California State Reference Code (formerly Title 19 – Fire Marshall).

### Product Specifications

- Door Range – 1½" - 1¾" (35mm-45mm) standard. Consult factory for special door ranges.
- Backset – 2¾" (70mm) Square standard. 2⅝" (60mm) available.
- Exposed Trim – Stainless Steel w/ iron forged cylinder guard.
- Strike – Standard Deadbolt Strike 1¼" x 2¾" (32 mm x 70 mm). Other strike options also available.
- Latchbolt – Full 1" (25.4mm) Throw with hardened steel roller Faceplate – 1½" x 2¼" (29mm x 57mm) Standard
- 1" x 2 ¼" (25.4mm x 57mm) Faceplate available.

### Keying

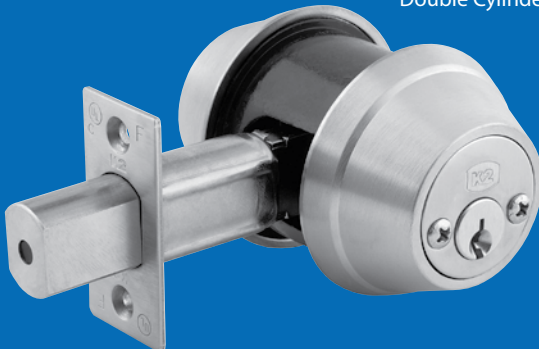
- 6-Pin Brass Cylinders. Many keying options available from our factory to include, but not limited to, master keying, grandmaster keying and construction keying. Best-F Small Format Interchangeable Core (SFIC) cylinder also available. (Keyed different only).
- 2 Keys per lockset.
- Offered with the following keyway options: KW-Kwikset, WE-Weiser, SC-Schlage, GA-Yale, LA-Sargent, BF-Best "F" & LC-Less Cylinder.

### Warranty

Lifetime Mechanical & 3 year finish\*  
 \*(613/US10B carries no finish warranty)



Single Cylinder



Double Cylinder

### Functions

ANSI	K2	Description
E0152	QDB280	Single Cylinder
E0152	QDB281	Single Cylinder SFIC
E0142	QDB282	Double Cylinder
E0142	QDB283	Double Cylinder SFIC
E0193	QDB284	Inside Turnbolt

### Finishes

BHMA	US	Description
605	US3	Bright Brass
613	US10B	Oil Rubbed Bronze
619	US15	Satin Nickel
625	US26	Bright Chrome
626	US26D	Satin Chrome

## Applications

The Heavy Duty QED100 series exit devices are designed for institutional, commercial uses such as educational, health care and industrial facilities where a long-lasting, highly durable product is required. These exit devices will deliver the operational requirements set forth while withstanding the physical abuse associated with the applied environment.

## Performance Features

- Tested and certified to significantly exceed 1,000,000 cycles – well above the requirements for Grade 1 certification.
- Thru-Bolted trim design for increased security and durability.
- Wide variety of trim options to fit any job.
- Consistent styling allows for suiting with other K2 Commercial Hardware products.

## Certifications



- ANSI/BHMA A156.3 Series Grade 1
- UL/cUL Listed (3-hours) for "A" Label Single Door applications (4' x 8') (1.219mt x 2.438mt)
- UL10C/UBC 7-2 (1997) Positive Pressure Rated
- UL10B Pressure Rated
- UL305 for Panic Hardware
- ANSI A117.1 Accessibility Code (ADA Compliant).
- California State Reference Code (formerly Title 19 - Fire Marshall).

## Product Specifications

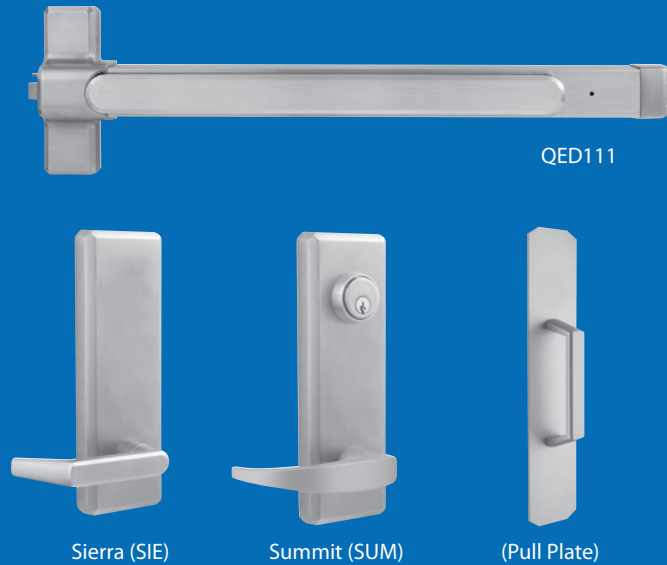
- Hanging – All QED100 series exit devices are non-handed.
- Door Thickness – 1¾" standard (44.5mm).
- Latchbolt – Stainless Steel ¾" throw (19mm).
- Fasteners – Wood Screws, Machine Screws & Sex Bolts Standard.
- Head Cap & End Cap – Zinc die-cast.
- Trims – Sierra and Summit Styles available.  
Escutcheon Offering – Dummy, Passage, Keyed, Night Latch.  
Pull Plate Offering – Dummy, Thumbpiece, Night Latch, Flat Plate.
- Stile Width - 4¼" Minimum (108mm).
- Dogging – Hex key dogging and cylinder dogging available.
- 36" Field Sizeable to 32" Door
- 48" Field Sizeable to 36" Door
- Standard Backset: 2 7⁄8" (62mm) to face of door stop
- Electrification options available

## Keying

- Offered with the following keyway options: KW-Kwikset, WE-Weiser, SC-Schlage, GA-Yale, LA-Sargent, BF-Best"™" (SCIF) & LC-Less Cylinder. (SFIC) offered keyed different only. Consult factory for details on Mortise and Rim Cylinder requirements.

## Warranty

Lifetime Mechanical & 3 year finish\*  
 \*(613/US10B carries no finish warranty)



## Functions

K2	Description
QED111	Rim Hex Dog
QED112	Rim Cylinder Dog
QED113	Rim Fire Rated

## Exit Trim Offerings

ANSI	K2	Description
02	QET120	Dummy Lever Escutcheon
02	QET125	Dummy Pull Plate
14	QET130	Passage Lever Escutcheon
08	QET160	Keyed Lever Escutcheon
05	QET165	Thumbpiece
02	QET167	Dummy Thumbpiece
09	QET170	Night Latch Lever Escutcheon
03	QET175	Night Latch Pull
01	QET190	Flat Plate

## Finishes

BHMA	US	Description
605	US3	Bright Brass
710	313AN	Anodized Duranodic Bronze
626	US26D	Satin Chrome

## Applications

The Heavy Duty QED100 series exit devices are designed for institutional, commercial uses such as educational, health care and industrial facilities where a long-lasting, highly durable product is required. These exit devices will deliver the operational requirements set forth while withstanding the physical abuse associated with the applied environment.

## Performance Features

- Tested and certified to significantly exceed 1,000,000 cycles – well above the requirements for Grade 1 certification.
- Thru-Bolted trim design for increased security and durability.
- Wide variety of trim options to fit any job.
- Consistent styling allows for suiting with other K2 Commercial Hardware products.

## Certifications



- ANSI/BHMA A156.3 Series Grade 1
- UL/cUL Listed (3-hours) for "A" Label Double Door applications (8' x 8') (2.438 mt x 2.438mt)
- UL10C/UBC 7-2 (1997) Positive Pressure Rated
- UL10B Pressure Rated
- UL305 for Panic Hardware
- ANSI A117.1 Accessibility Code (ADA Compliant)
- California State Reference Code (formerly Title 19 - Fire Marshall).

## Product Specifications

- Hanging – All QED100 series exit devices are non-handed.
- Door Thickness – 1¾" standard (44.5mm).
- Door Height - 7' standard with 84" rods; 8' optional with 96" rods (2.1336mt) (2.4384mt).
- Latchbolt – Stainless Steel ½" throw (12.7mm).
- Fasteners – Wood Screws, Machine Screws & Sex bolts standard.
- Head Cap & End Cap – Zinc die-cast.
- Trims – Sierra and Summit Styles available.  
Escutcheon Offering – Dummy, Passage, Keyed, Night Latch.  
Pull Plate Offering – Dummy, Thumbpiece, Night Latch, Flat Plate.
- Stile Width - 3½" Minimum (89mm).
- Dogging – Hex key dogging and cylinder dogging available.
- 36" Field Sizeable to 32" Door
- 48" Field Sizeable to 36" Door
- Standard Backset: 2 7⁄8" (62mm) to face of door stop.
- Electrification options available

## Keying

- Offered with the following keyway options: KW-Kwikset, WE-Weiser, SC-Schlage, GA-Yale, LA-Sargent, BF-Best"™" (SCIF) & LC-Less Cylinder. (SFIC) offered keyed different only. Consult factory for details on Mortise and Rim Cylinder requirements.

## Warranty

Lifetime Mechanical & 3 year finish\*  
 \*(613/US10B carries no finish warranty)



## Functions

K2	Description
QED114	SVR Hex Dog
QED115	SVR Cylinder Dog
QED116	SVR Fire Rated
QED117	SVR Less Bottom Rod Hex Dog
QED118	SVR Less Bottom Rod Cylinder Dog
QED119	SVR Less Bottom Rod - Fire Rated

## Exit Trim Offerings

ANSI	K2	Description
02	QET120	Dummy Lever Escutcheon
02	QET125	Dummy Pull Plate
14	QET130	Passage Lever Escutcheon
08	QET160	Keyed Lever Escutcheon
05	QET165	Thumbpiece
02	QET167	Dummy Thumbpiece
09	QET170	Night Latch Lever Escutcheon
03	QET175	Night Latch Pull
01	QET190	Flat Plate

## Finishes

BHMA	US	Description
605	US3	Bright Brass
710	313AN	Anodized Duranodic Bronze
626	US26D	Satin Chrome



### Applications

The Heavy Duty QED100 series exit devices are designed for institutional, commercial uses such as educational, health care and industrial facilities where a long-lasting, highly durable product is required. These exit devices will deliver the operational requirements set forth while withstanding the physical abuse associated with the applied environment.

### Performance Features

- Tested and certified to significantly exceed 1,000,000 cycles – well above the requirements for Grade 1 certification.
- Thru-Bolted trim design for increased security and durability.
- Wide variety of trim options to fit any job.
- Consistent styling allows for suiting with other K2 Commercial Hardware products.

### Certifications



- ANSI/BHMA A156.3 Series Grade 1
- UL/cUL Listed (3-hours) for "A" Label Double Door applications (8' x 8') (2.438 mt x 2.438mt)
- UL10C/UBC 7-2 (1997) Positive Pressure Rated
- UL10B Pressure Rated
- UL305 for Panic Hardware
- ANSI A117.1 Accessibility Code (ADA Compliant)
- California State Reference Code (formerly Title 19 - Fire Marshall).

### Product Specifications

- Handing – All QED100 series exit devices are non-handed.
- Door Thickness – 1¾" standard (44.5mm).
- Door Height - 7' standard with 84" rods; 8' optional with 96" rods (2.1336mt) (2.4384mt).
- Latchbolt – Stainless Steel ½" throw (12.7mm).
- Fasteners – Wood Screws, Machine Screws & Sex bolts standard.
- Head Cap & End Cap – Zinc die-cast.
- Trims – Sierra and Summit Styles available.  
Escutcheon Offering – Dummy, Passage, Keyed, Night Latch.  
Pull Plate Offering – Dummy, Thumbpiece, Night Latch, Flat Plate.
- Stile Width - 3½" Minimum (89mm).
- Dogging – Hex key dogging and cylinder dogging available.
- 36" Field Sizeable to 32" Door
- 48" Field Sizeable to 36" Door
- Standard Backset: 2 7⁄8" (62mm) to face of door stop.
- Electrification options available

### Keying

- Offered with the following keyway options: KW-Kwikset, WE-Weiser, SC-Schlage, GA-Yale, LA-Sargent, BF-Best"™" (SCIF) & LC-Less Cylinder. (SFIC) offered keyed different only. Consult factory for details on Mortise and Rim Cylinder requirements.

### Warranty

Lifetime Mechanical & 3 year finish\*  
 \*(613/US10B carries no finish warranty)



### Functions

K2	Description
QED124	CVR Hex Dog
QED125	CVR Cylinder Dog
QED126	CVR Fire Rated
QED127	CVR Less Bottom Rod Hex Dog
QED128	CVR Less Bottom Rod Cylinder Dog
QED129	CVR Less Bottom Rod - Fire Rated

### Exit Trim Offerings

ANSI	K2	Description
02	QET120	Dummy Lever Escutcheon
02	QET125	Dummy Pull Plate
14	QET130	Passage Lever Escutcheon
08	QET160	Keyed Lever Escutcheon
05	QET165	Thumbpiece
02	QET167	Dummy Thumbpiece
09	QET170	Night Latch Lever Escutcheon
03	QET175	Night Latch Pull
01	QET190	Flat Plate

### Finishes

BHMA	US	Description
605	US3	Bright Brass
710	313AN	Anodized Duranodic Bronze
626	US26D	Satin Chrome

### Applications

The Standard Duty QED300 series exit devices are designed for multi-family, tenant improvement uses such as apartment complexes, retail/storefront, small office buildings and hotels/motels where a stylish, yet durable product is required.

### Performance Features

- Tested to significantly exceed 500,000 cycles required for Grade 1 certification.
- Field sizeable. 36" to 32" door application (91.44cm)(81.28cm).
- Thru-Bolted tt design for increased security and durability.
- Consistent styling allows for suiting with other K2 Commercial Hardware products.

### Certifications



- ANSI/BHMA A156.3 Series Grade 1
- UL/cUL Listed (3-hours) for "A" Label Single Door applications (4'x 8') (1.219mt x 2.438mt)
- UL10C/UBC 7-2 (1997) Positive Pressure Rated
- UL10B Pressure Rated
- UL305 for Panic Hardware
- ANSI A117.1 Accessibility Code (ADA Compliant)
- California State Reference Code (formerly Title 19 - Fire Marshall)

### Product Specifications

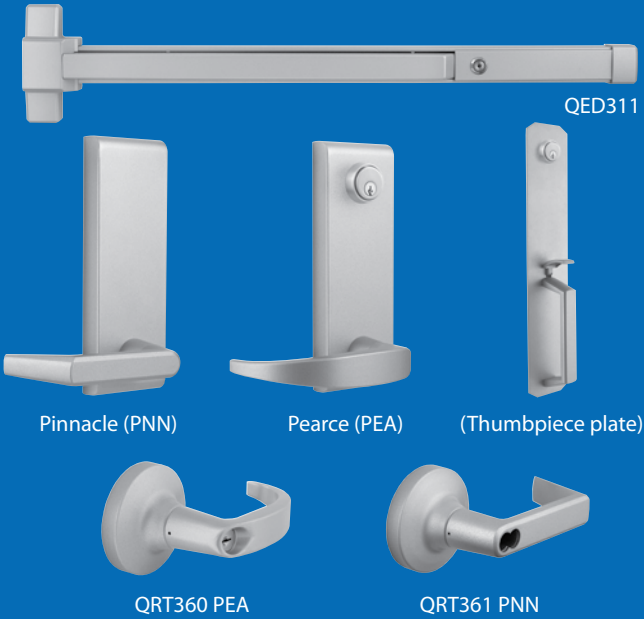
- Handing – All QED300 series exit devices are non-handed.
- Door Thickness – 1¾" standard (44.5mm).
- Latchbolt – Stainless Steel ¾" throw with deadlatch (19mm).
- Strike – Stainless Steel body with plated steel roller standard. Fire Rated stainless steel strike with stainless steel roller standard on QED313.
- Fasteners – Wood and machine screws standard. Sex bolts optional. (Standard on Fire Rated device).
- Head Cap & End Cap – Zinc die-cast.
- Trims – Pinnacle and Pearce styles available.  
Escutcheon Offering – Dummy, Passage, Keyed, Night Latch.  
Pull Plate Offering – Dummy, Thumbpiece, Night Latch, Flat Plate.
- Stile Width - 3¾" (98mm) Minimum.
- Dogging – Hex key dogging and cylinder dogging available.
- Standard Backset: 2 ¼" (57mm) to face of door stop.

### Keying

- Offered with the following keyway options: KW-Kwikset, WE-Weiser, SC-Schlage, GA-Yale, LA-Sargent, BF-Best"™" (SCIF) & LC-Less Cylinder. (SFIC) offered keyed different only. Consult factory for details on Mortise and Rim Cylinder requirements.

### Warranty

Lifetime Mechanical & 3 year finish



### Exit Device Functions

K2	Description
QED311	Rim Hex Dog
QED312	Rim Cylinder Dog
QED313	Rim Fire Rated

### Exit Trim Offerings

ANSI	K2	Description
02	QET320	Dummy Lever Escutcheon
02	QET325	Dummy Pull Plate
14	QET330	Passage Lever Escutcheon
08	QET360	Keyed Lever Escutcheon
05	QET365	Thumbpiece
02	QET367	Dummy Thumbpiece
09	QET370	Night Latch Lever Escutcheon
03	QET375	Night Latch Pull
01	QET390	Flat Plate
02	QRT320	Dummy Round Rose Lever
14	QRT330	Passage Round Rose Lever
08	QRT360	Keyed Round Rose Lever
09	QRT370	Night Latch Round Rose Lever

### Finishes

BHMA	Description
689	Painted Aluminum
690	Painted Duranodic Bronze

## Applications

The Standard Duty QED300 series surface vertical rod exit devices are designed for multi-family, tenant improvement uses such as apartment complexes, retail/storefront, small office buildings and hotels/motels where a stylish, yet durable product is required.

## Performance Features

- Tested to significantly exceed 500,000 cycles required for Grade 1 certification.
- Field sizeable, 36" to 32" door application (91.44cm)(81.28cm).
- Thru-Bolted trim design for increased security and durability.
- Consistent styling allows for suiting with other K2 Commercial Hardware products.

## Certifications



- ANSI/BHMA A156.3 Series Grade 1
- UL/cUL Listed (1 ½-hours) for "B" Label Double Door applications (8' x 8') (2.438mt x 2.438mt)
- UL10C/UBC 7-2 (1997) Positive Pressure Rated
- UL10B Pressure Rated
- UL305 for Panic Hardware
- ANSI A117.1 Accessibility Code (ADA Compliant)
- California State Reference Code (formerly Title 19 - Fire Marshall)

## Product Specifications

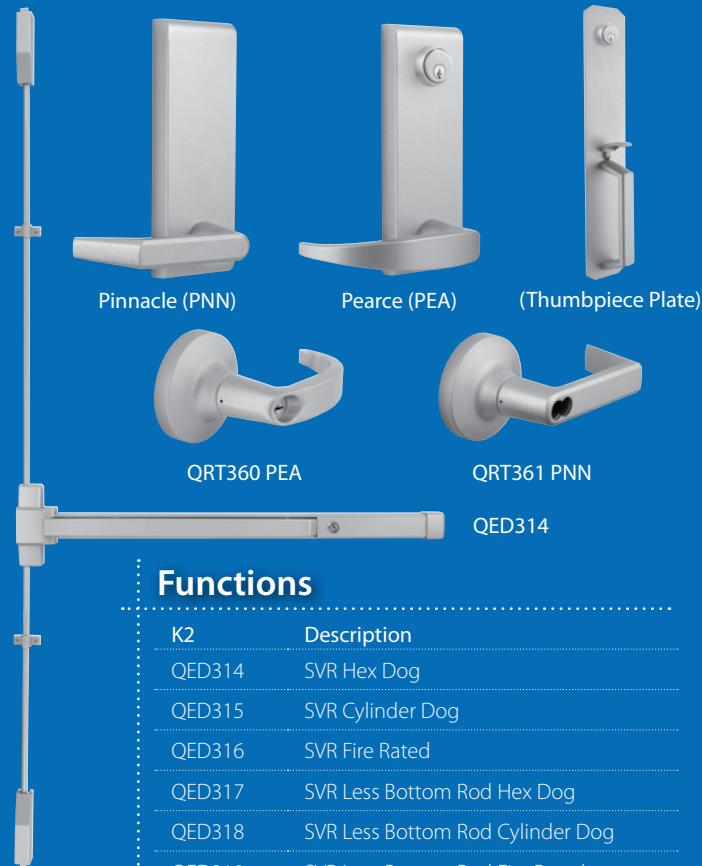
- Handing – All QED300 series exit devices are non-handed.
- Door Thickness – 1 ¾" standard (44.5mm).
- Door Height – 7" standard with 84" rods; 8" optional with 96" rods. (2.1336mt x 2.438mt)
- Latchbolt – ½" (12.7mm) Throw on top latch; ¾" (9.53mm) on bottom latch.
- Fasteners – Wood and machine screws standard. Sex bolts optional. (Standard on Fire Rated device).
- Head Cap & End Cap – Zinc die-cast.
- Trims – Pinnacle and Pearce styles available. Escutcheon Offering – Dummy, Passage, Keyed, Night Latch. Pull Plate Offering – Dummy, Thumbpiece, Night Latch, Flat Plate.
- Stile Width - 3 ½" (89mm) Minimum.
- Dogging – Hex key dogging and cylinder dogging available
- Standard Backset: 2 ¼" (57mm) to face of door stop.

## Keying

- Offered with the following keyway options: KW-Kwikset, WE-Weiser, SC-Schlage, GA-Yale, LA-Sargent, BF-Best" (SCIF) & LC-Less Cylinder. (SFIC) offered keyed different only. Consult factory for details on Mortise and Rim Cylinder requirements.

## Warranty

Lifetime Mechanical & 3 year finish



## Functions

K2	Description
QED314	SVR Hex Dog
QED315	SVR Cylinder Dog
QED316	SVR Fire Rated
QED317	SVR Less Bottom Rod Hex Dog
QED318	SVR Less Bottom Rod Cylinder Dog
QED319	SVR Less Bottom Rod Fire Rated

## Exit Trim Offerings

ANSI	K2	Description
02	QET320	Dummy Lever Escutcheon
02	QET325	Dummy Pull Plate
14	QET330	Passage Lever Escutcheon
08	QET360	Keyed Lever Escutcheon
05	QET365	Thumbpiece
02	QET367	Dummy Thumbpiece
09	QET370	Night Latch Lever Escutcheon
03	QET375	Night Latch Pull
01	QET390	Flat Plate
02	QRT320	Dummy Round Rose Lever
14	QRT330	Passage Round Rose Lever
08	QRT360	Keyed Round Rose Lever
09	QRT370	Night Latch Round Rose Lever

## Finishes

BHMA	Description
689	Painted Aluminum
690	Painted Duranodic Bronze

## Applications

The heavy duty QDC200 series slim-line door closers are designed for institutional, commercial uses such as educational, health care and industrial facilities where a long-lasting, highly durable product is required.

## Performance Features

- Tested to significantly exceed the performance requirements for Grade 1 certification.
- Fully adjustable from 1-6 allowing for maximum flexibility.
- Delayed Action and Backcheck are standard in the same door closer body.
- All weather oil insures optimal operational performance in multiple climate conditions.
- Sized for interior doors to 5'0"; exterior doors to 4'6".

## Certifications



- ANSI/BHMA A156.4 Series Grade 1
- ANSI A117.1 Accessibility Code
- UL/cUL listed (3-hours) for self-closing doors without hold-open
- UL10C Positive Pressure Rated
- UL10B Pressure Rated

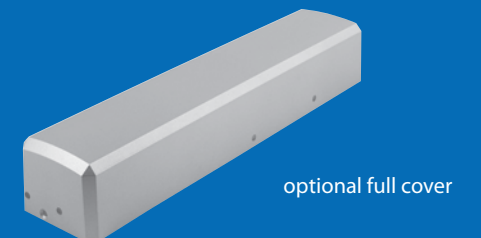
## Product Specifications

- Handing – All QDC200 series door closers are non-handed.
- Material – Cast aluminum.
- Cover – Slim-line plastic cover standard. Full, architectural plastic cover also available.
- Arms & Brackets – Tri-pack standard (Regular, Top Jamb, Parallel configurations). Hold Open and Dead Stop arms also available.
- Arm Material – Heat treated carbon steel.
- Springs – High impact hand drawn steel wires.
- Pinions – Heat treated chrome molybdenum steel.
- Cylinder construction – Heat treated free-cutting carbon steel.
- Fasteners – Wood and machine screws standard. Sex nuts and bolts optional.

Size	Applicable Door Weight	Door Width Ranges	
		Interior	Exterior
1	33 ~ 55 LBS (15 ~ 30 Kg)	32"	28"
2	56 ~ 99 LBS (30 ~ 45 Kg)	36"	32"
3	99 ~ 143 LBS (45 ~ 55 Kg)	42"	36"
4	143 ~ 187 LBS (65 ~ 85 Kg)	48"	42"
5	187 ~ 264 LBS (85 ~ 120 Kg)	54"	48"
6	264 ~ 330 LBS (120 ~ 150 Kg)	58"	54"

## Warranty

Lifetime Mechanical & 3 year finish



## Functions

K2	Description
QDC211	Tri-Packed Arm, Non-Hold Open
QDC212	Hold Open Arm
QDC213	Dead Stop (Cush) Arm
QDC214	Dead Stop (Cush) Hold Open Arm

## Finishes

BHMA	Description
689	Painted aluminum
690	Painted Duranodic Bronze
696	Painted Satin Brass

### Applications

The standard duty QDC300 series door closers are designed for multi-family, tenant improvement uses such as apartment complexes, retail/storefront, small office buildings and hotels/motels where a stylish, yet durable product is required

### Performance Features

- Tested to exceed the performance requirements for Grade 1 certification.
- Fully adjustable from 1-6 allowing for maximum flexibility.
- Delayed Action and Backcheck are standard in the same door closer body.
- All weather oil insures optimal operational performance in multiple climate conditions.
- Sized for interior doors to 4'6"; exterior doors to 4'0".

### Certifications



- ANSI/BHMA A156.4 Series Grade 1
- ANSI A117.1 Accessibility Code
- UL/cUL listed (3-hours) for self-closing doors without hold-open
- UL10C Positive Pressure Rated
- UL10B Pressure Rated

### Product Specifications

- Handing – All QDC300 series door closers are non-handed.
- Material – Cast aluminum.
- Cover – Full, architectural plastic cover option available.
- Arms & Brackets – Tri-pack standard (Regular, Top Jamb, Parallel configurations). Hold Open and Dead Stop arms also available.
- Arm Material – Heat treated carbon steel.
- Springs – High impact hand drawn steel wires.
- Pinions – Heat treated chrome molybdenum steel.
- Cylinder construction – Heat treated free-cutting carbon steel.
- Fasteners – Wood and machine screws standard. Sex nuts and bolts optional.

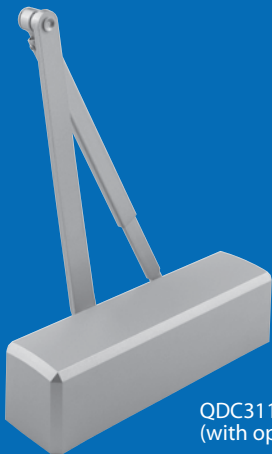
Door Weights & Sizes:		Door Width Ranges	
Size	Applicable Door Weight	Interior	Exterior
1	33 ~ 55 LBS (15 ~ 30 Kg)	32"	28"
2	56 ~ 99 LBS (30 ~ 45 Kg)	36"	32"
3	99 ~ 143 LBS (45 ~ 55 Kg)	42"	36"
4	143 ~ 187 LBS (65 ~ 85 Kg)	48"	42"
5	187 ~ 264 LBS (85 ~ 120 Kg)	54"	48"
6	264 ~ 330 LBS (120 ~ 150 Kg)	58"	54"

### Warranty

Lifetime Mechanical & 3 year finish



QDC311



QDC311  
(with optional full cover)

### Functions

K2	Description
QDC311	Non-Hold Open Arm (Standard Tri-Pack)
QDC312	Hold Open Arm
QDC313	Dead Stop (Cush) Arm
QDC314	Dead Stop (Cush) Hold Open Arm

### Finishes

BHMA	Description
689	Painted Aluminum
690	Painted Duranodic Bronze
696	Painted Satin Brass

LIFETIME  
MECHANICAL

W A R R A N T Y

3 YEAR FINISH

W A R R A N T Y

1 YEAR  
ELECTRICAL

W A R R A N T Y

- Proven Performance & Durability
- Easiest Company to Do Business With
- Backed by Black & Decker





- **LIFETIME MECHANICAL WARRANTY**
- **3 YEAR FINISH WARRANTY\***
- **1 YEAR ELECTRICAL WARRANTY**

### Product Warranty Information

This product comes with a **lifetime mechanical warranty** and a **three year finish warranty\*** to the original user of the K2 Commercial Hardware product against defects in material and workmanship as long as the original user occupies/manages the premises upon which the product was originally installed. The warranty DOES NOT COVER scratches; abrasions; deterioration due to the use of paints, solvents and other chemicals; abuse; or misuse, and DOES NOT COVER US10B/613 "Oil Rubbed Bronze" finish as it is a "Living Finish" and a change in appearance is the natural characteristic of the finish. This warranty DOES NOT COVER defects caused by improper installation or field modification. This warranty DOES NOT COVER the cost incurred in removing and installing a replacement product. Upon return of a defective product to K2 Commercial Hardware, K2 may repair or replace the product or refund the purchase price. K2 is not liable for incidental or consequential damages. Some states do not allow the exclusion or limitation of incidental or consequential damages, so this may not apply to you. This warranty gives you specific legal rights and you may also have other rights that vary from state to state. If a mechanical or finish defect occurs, please call 866-590-2094 or return it to K2 Commercial Hardware at:

**19701 DaVinci**  
**Lake Forest, CA 92610**  
**[www.K2commercialhardware.com](http://www.K2commercialhardware.com)**  
**866-590-2094**



**COMMERCIAL  
HARDWARE**  
BY  **BLACK & DECKER**