

# DRUM HANDLING EQUIPMENT

For Steel, Fiber and Plastic Drums



- |                     |            |               |            |
|---------------------|------------|---------------|------------|
| • CRUSHER/COMPACTOR | • JACKS    | • GRIPPERS    | • FAUCETS  |
| • DUMPERS           | • RACKS    | • DOLLIES     | • WRENCHES |
| • OVERHEAD LIFTERS  | • ROTATORS | • HAND TRUCKS | • SOCKETS  |

# HYDRAULIC DRUM CRUSHER/COMPACTOR

HDC-900-IDC

The model **HDC-900-IDC** crushes 55 gallon steel drums to approximately 6" high and resets automatically to crush another drum in only 25 seconds. The standard drum compacting feature allows you to compact products within the drum by simply removing the drum crushing platen. This convenient design gives you two pieces of equipment in one. Safety features include a pressure relief valve, which prevents overload and a door interlock system, which will prevent the motor from running unless the door is closed.

## FEATURES

- 38,000 pounds of crushing power
- Drum head piercer to allow for drum venting
- Built-in fork pockets to aid in transporting
- 6.5 Hp motor is 208-230/460V, 3-phase, 60 Hz
- Protective plastic cover on power unit
- 15 gallon oil reservoir
- Dual speed hydraulic pump provides quick, 25 second cycle time
- 24V NEMA-4 push-button controls with key lockout
- 3-position "COMPACT - OFF - CRUSH" key selector switch
- Mushroom head emergency stop button
- Relief valve to prevent hydraulic system overload
- Door interlock system with key
- Protective cover for indoor and outdoor applications
- Meets OSHA and JIC standards

## REDUCE DRUM STORAGE SPACE AND DISPOSAL COSTS



Crushes a drum to approximately 6" high



Includes Removable drum crushing platen & a 2 position key switch to select crush or compact



Safety door interlock system

Model Number	Description	Overall Size (W x D x H)	Crushing Power
HDC-900-IDC	Drum Crusher/Compactor	36" x 44" x 90"	38,000 lbs.
HDC-DPN	Aluminum Drip Pan (holds 7.5 gal.)	30" x 20" x 3"	--
HDC9-1	Single Phase, 3HP Power Unit*	--	--

\* Cycle time increases to approximately 70 seconds

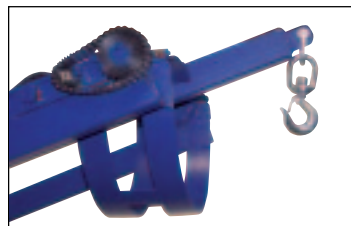
# HYDRAULIC DRUM CARRIER/ROTATOR

HDC-305

The Carrier/Boom allows one person to lift, transport and dispense fully loaded 55 gallon steel drums with ease. This model features a foot pump hydraulic lift, and rolls on 4" rear swivel casters and 8" front rigid wheels. There is a hand crank on the 60" model and chain rotation on the other models. All models feature a boom attachment which stores on the outriggers.

## OPTIONS

- AC Power Unit, 115V 1-Phase (lift only)
- DC Power Unit (lift only)
- Factory Air/Oil Unit (lift only)
- Fiber Drum Adaptor
- 30 Gallon Drum Steel Saddle



Boom Attachment

Boom in Stored Position



Model Number	Rotation Method	Lift Height	Capacity (pounds)
HDC-305-60	Hand Crank	60"	800
HDC-305-72	Pull Chain	72"	800
HDC-305-84	Pull Chain	84"	800
HDC-305-96	Pull Chain	96"	800

*Drum must be full to rotate at rated capacity.*

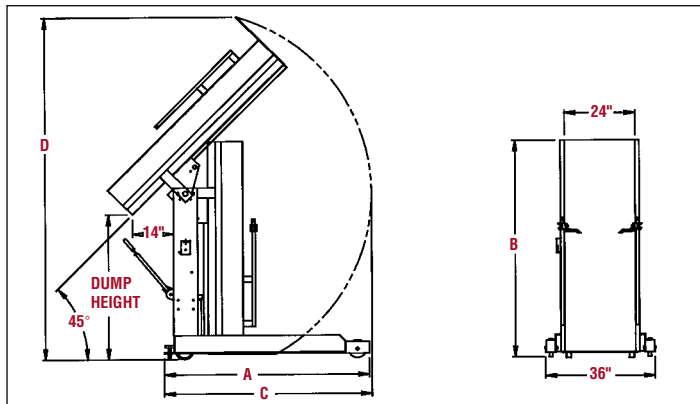
# HYDRAULIC DRUM DUMPERS

Series HDD

The Hydraulic Drum Dumper is what you need to dump drums that weight up to 1,500 lbs. Available in either a portable or stationary model. The HDD has a solid steel chute (stainless steel chutes are available for special applications).

## FEATURES

- 24V water resistant, hand held push-button control
- 56 frame, 3/4 HP motor
- Standard voltage is 110V/220V, 1-Phase, 60 Hz (other voltages available)
- Emergency brass safety velocity fuse in cylinder
- Upper travel limit switch
- Vertical adjustment drum restraints
- All steel construction



## AVAILABLE OPTIONS

- 30 gallon drum adaptor
- Air/Hydraulic oil power unit
- 3-Phase power
- Stainless Steel Chute
- 12V DC power

## COMPLETE TILTING TIME

750 lbs. capacity = 25 seconds  
1,000 lbs. capacity = 25 seconds  
1,500 lbs. capacity = 30 seconds

## PORTABLE DRUM DUMPERS

Dump Height	Dim. "A"	Dim. "B"	Dim. "C"	Dim. "D"
36"	58-1/2"	60-3/4"	59-1/2"	93-1/2"
42"	64-1/4"	66-3/4"	64-1/2"	103-1/2"
48"	68-1/4"	72-3/4"	70-1/2"	114"
54"	76-3/4"	78-3/4"	76-1/2"	124"
60"	76-3/4"	84-3/4"	82-1/2"	134-1/2"
72"	89"	97"	91-1/4"	156"

## STATIONARY DRUM DUMPERS

Dump Height	Dim. "A"	Dim. "B"	Dim. "C"	Dim. "D"
36"	53-5/8"	60-1/2"	58-1/2"	92"
42"	59-5/8"	66-1/2"	64-1/2"	100"
48"	63-5/8"	72-1/2"	70-1/2"	112-1/2"
54"	72-1/8"	78-1/2"	76-1/2"	122-1/2"
60"	72-1/8"	84-1/2"	82-1/2"	133"
72"	84-1/2"	96-3/8"	90-1/4"	153-1/4"



56 Frame Motor



Hand Held Pendant Control

# HYDRAULIC DRUM STACKER

HDC-450

The Drum Stacker is perfect for positioning 55 gallon steel drums horizontally on shelves. The solid steel construction provides stability during transit. Unit rolls easily on (2) 8" x 2" phenolic casters and (2) 5" x 2" swivel polyurethane casters. Comes standard with hydraulic foot pump.

## PORTABLE DRUM STACKER

Model Number	Rotation Method	Lift Height	Capacity (pounds)
HDC-450-60	Hand Crank	60"	800
HDC-450-72	Pull Chain	72"	800
HDC-450-84	Pull Chain	84"	800
HDC-450-96	Pull Chain	96"	800

*Drum must be full to rotate at rated capacity.*

## STACKABLE DRUM RACKS

Model Number	Drum Capacity	Overall Size (W x D x H)	Capacity (pounds)
DRUM-RACK-2	(1) 55 Gallon Steel Drum	45" x 30" x 25-1/2"	1,600
DRUM-RACK-4	(2) 55 Gallon Steel Drum	71" x 30" x 25-1/2"	2,400



## OPTIONS:

- AC Power Unit, 115V 1-Phase (lift only)
- DC Power Unit (lift only)
- Factory Air/Oil Unit (lift only)

Racks have two way forklift access, not recommended to be moved stacked more than 2 racks high. All steel construction with 1/4" formed steel drum cradles. Bolt together assembly. Works with the Drum Positioner on page 6.



## FORK MOUNTED DRUM CARRIER/ROTATOR

DCR-205

The series **DCR-205**, Drum Carrier/Rotator allows you to easily transport and rotate 55 gallon steel drums using a fork truck. Drums are held securely in place by a durable chain locking system. Each unit is provided with a 15 foot long operating chain to allow the drum to be rotated from the fork truck operator's seat. Fork pockets measure 6-1/2" x 2-1/2" usable.

Model Number	Drum Type	Crank Turns Per 90° Rotation	Capacity (pounds)
DCR-205-8	55 Gallon Steel Drum	7-1/2	800
DCR-205-15	55 Gallon Steel Drum	15	1,500

*Drum must be full to rotate at rated capacity.*



### OPTIONS:

- Fiber Drum Adaptor
- 30 Gallon Drum Steel Saddle

## HOIST MOUNTED DRUM CARRIER/ROTATOR

DCT

The model **DCT** works best when used with an overhead hoist or chain to position and/or rotate 55 gallon steel drums. The DCT features a chain crank which allows the operator to rotate drums that are out of reach.

Model Number	Drum Type	Rotation Method	Capacity (pounds)
DCT-75	55 Gallon Steel Drum	10 ft. Chain	800
DCT-85	55 Gallon Steel Drum	10 ft. Chain	1,500

### OPTIONS:

- Fiber Drum Adaptor
- 30 Gallon Drum Steel Saddle



## MANUAL DRUM CARRIER/ROTATOR

DCR-110-55

Here is an efficient, economical way to handle 55 gallon drums. Sturdy handle provides easy leverage for heavy lifting. Drum is easily rotated and locked in position, 5" to 11" floor clearance. Rolls easily on 8" front wheels and 4" rear swivel caster. Optional Fiber Drum Adaptor and 30 Gallon Steel Saddle available.

Model Number	Drum Type	Rotation Method	Capacity (pounds)
DCR-110-55	55 Gallon Steel Drum	Manual	800



## FIBER/PLASTIC DRUM ADAPTORS & UPGRADES

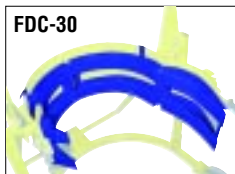
The Fiber Drum Adaptor is designed to hold and support fiber and plastic drums preventing them from getting crushed and ruined. Model **FDA-800** comes complete with both an adjusting arm and a high strength nylon strap.

Model **FDC-30** is a Solid Steel Insert that attaches to the inner rim of the carrier/rotator portion of a 55 gallon steel drum handler so that a 30 gallon steel drum can be used.

Model **FDRS** is a Dual Ratchet Strap to accommodate both 30 and 55 gallon drums. Requires factory installation.

Each adaptor can be utilized in conjunction with: DCR-110, DCR-205, DCT and HDC-305.

FDC-30



FDRS



FDA-800





# AUTOMATIC EAGLE-BEAK™ DRUM LIFTER

FMDL

- Simple & Easy Operation
- Low Maintenance Design
- Completely Automatic Operation

This time tested and proven design allows a fork truck operator to easily secure, move and release drums without leaving the seat of the fork truck. For use with open and closed head plastic, steel and fiber drums with a top lip strong enough to support the weight of the drum. Choose single-drum or double-drum configuration. Includes safety chain and T-Locks to secure unit to the fork truck. Welded steel construction. Powder coat finish. Accommodates 30 and 55 gallon drums. Fork pockets measure 6-1/2" wide x 2-1/2" high usable.

Model Number	Number of Drums	Capacity (pounds)	Overall Size (W x L x H)
FMDL-1	1	1,000	26-1/2" x 46-1/2" x 29"
FMDL-2	2	2,000	42" x 49-1/2" x 29"



# FORK MOUNTED POLY DRUM HANDLERS

FPDL

These easy to use plastic drum handlers are constructed of all welded steel. Includes safety chain and T-locks for securing unit to the fork truck. Durable powder coat finish.

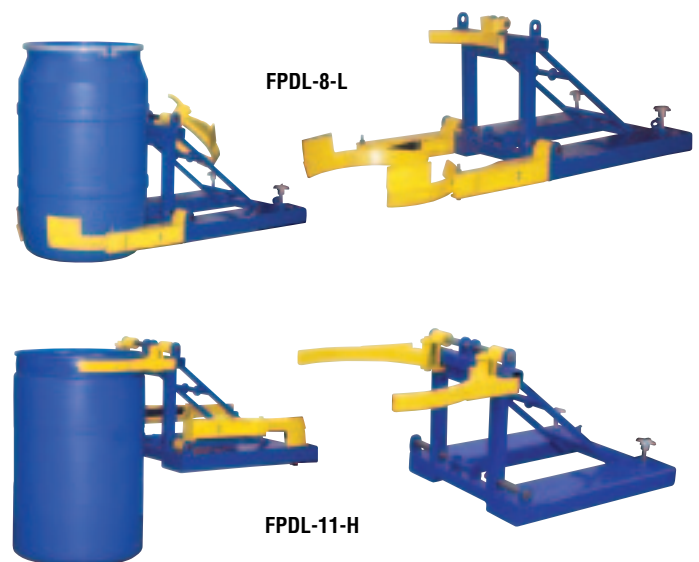
## Model FPDL-8-L

Adjustable arms are designed to fit 55 gallon round bottom plastic drums. Low drum attachment point allows for use of both open and closed head drums.

## Model FPDL-11-H

Top lip plastic drum lifter for use with 30 and 55 gallon plastic closed head drums. 6-1/2" wide x 2-1/2" high usable fork tubes on 19-1/2" centers. High drum attachment point for use with top lip at least 3/16" high.

Model Number	Description	Capacity (pounds)	Overall Size (W x L x H)
FPDL-8-L	Bottom Grip	800	26-1/2" x 56-1/2" x 23"
FPDL-11-H	Top Grip	1,100	26-1/2" x 48-1/2" x 23"



# DELUXE COMBINATION FORK MOUNTED DRUM LIFTER

DFDL-3

Deluxe Combination Fork Mounted Drum Lifter includes attachments to lift any type of drum; 30 and 55 gallon, steel, plastic, fiber and open or closed head drums. Includes single Eagle-Beak™ unit and both bottom and top lip Poly Drum Lifter. Capacity will vary depending upon which attachment you are using. Fork pockets have an inside measurement of 6-1/2" wide by 2-1/2" high. Includes safety chain and T-locks for securing unit to fork truck. Welded steel construction. Powder coat finish.

Model Number	Drums Accepted	Drum Attachment	Capacity (pounds)
DFDL-3	30 & 55 Gallon	Single Eagle Beak™	1,000
	Steel, Plastic, Fiber,	Bottom Lip Poly Drum Lifter	800
	Open or Closed Head	Top Lip Poly Drum Lifter	1,100



Shown with Top Lip Poly Drum Lifter in Use

## DRUM POSITIONER

DRUM-P

New innovative design allows fork truck driver to invert standing drums to the horizontal racking position. Positive latching system ensures safe handling up to 800 lbs. capacity. Slide the positioner extensions over the vertical drum. With the aid of the Drum Positioner rotate drum to horizontal position. Latching system will engage to allow horizontal positioning of drum. It's now ready to slide into the rack. Fork pockets measure 6-1/2"W x 2-1/2"H usable on 19-1/2" centers.



Rotate drum from vertical to horizontal and horizontal to vertical position.

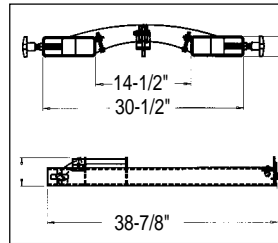
Model Number	Description	Capacity (pounds)	Overall Size (W x L x H)
DRUM-P	Fork Mounted Positioner	800	26-1/2" x 67" x 32-1/2"

## HORIZONTAL DRUM CRADLE

HORIZ-70

- Capacity is 650 pounds
- Use on Open or Closed Head Steel Drums
- Fork Pockets Measure 7-1/2"W x 2-1/2"H

The Horizontal Drum Cradle is used to load and unload drums horizontally in racks. "T" handles secure cradle to the forks to maximize safety and productivity. Drum lock engages and disengages automatically as a function of the fork angle.

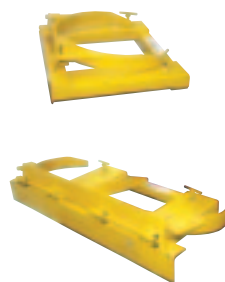


Model Number	Description	Capacity (pounds)
HORIZ-70	Open or Closed 55 Gallon Steel Drums	650

## FORK MOUNTED DRUM GRIPPERS

DGS & DGD

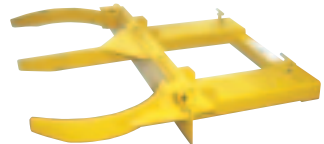
The Drum Gripper makes it easy to pick up (1) or (2) drums without leaving the fork truck. Simply slip the fork tines into the fork tubes and the Drum Gripper is ready to go. The knuckle gripping system is lowered around the drum, gripped tightly, and then lifted into the air. Drum is automatically released by lowering the forks. DGS-55-D and DGD-55-D feature hinged folding design.



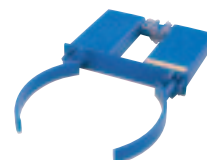
Model DGS-55-D  
Folded Dimension:  
28"W x 24"D x 8-1/2"H  
Fork Pockets: 2" x 6-1/4"



Model DGD-55-D  
Folded Dimension:  
34"W x 24"D x 8-1/2"H  
Fork Pockets: 2" x 6-1/4"



Model Number	Acceptable Drum Types	Capacity (pounds)	Fork Pocket Centers	Overall Size (W x D x H)
DGS-30	(1) 30 Gallon Steel	800	13-1/2"	22" x 32" x 4"
DGS-55	(1) 55 Gallon Steel	800	13-1/2"	17" x 42" x 3"
DGS-55-D	(1) 55 Gallon Steel	800	13-1/2"	28-1/4" x 24" x 8"
DGD-30	(2) 30 Gallon Steel	1,500	24"	46-1/2" x 32" x 4"
DGD-55	(2) 55 Gallon Steel	1,500	24"	37" x 46-1/2" x 4"
DGD-55-D	(2) 55 Gallon Steel	1,500	24"	46" x 24-1/4" x 9-1/2"



DGS-55  
Fork Pockets: 2-1/2" x 7-1/4"



DGD-55  
Fork Pockets: 2-1/2" x 7-1/4"

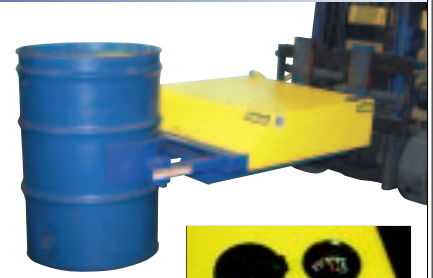
# FORK MOUNTED HYDRAULIC DRUM GRIPPERS

DRUM-HYD

- Electric Hydraulic Operation
- Accommodates 55 & 30 Gallon Steel Drums
- Single or Double Drum Design
- Capacities up to 2,000 lbs.



DRUM-HYD-2



DRUM-HYD-1



Model Number	Acceptable Drum Types	Capacity (pounds)	Operation
DRUM-HYD-1	55 & 30 Gallon Steel	1,000	Electric Hydraulic
DRUM-HYD-2	55 & 30 Gallon Steel	2,000	Electric Hydraulic

# ECONOMICAL MECHANICAL DRUM TRANSPORTER

DCR-880-M

- Simple Design
- Completely Mechanical Operation

Unique design is ideal for lifting and transporting plastic, steel and fiber drums with a top lip. Unit features a manual mechanical ratchet lift mechanism for lifting drums up to 12" above the floor. Spring loaded steel jaws securely grip top lip of drum. Straddle legs rotate for access to drums on pallets.



Legs are adjustable for drum access on pallets by simply removing the pin lock.

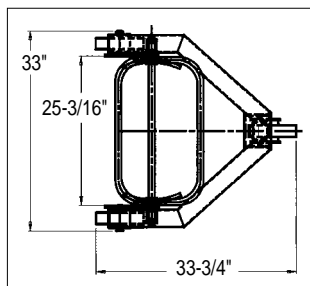


Model Number	Maximum Lift Height	Capacity (pounds)	Overall Size (W x L x H)
DCR-880-M	12"	880	38" x 32" x 46"

# DRUM CONTROLLER

DC-550

- Capacity is 550 lbs.
- Lift Height of 2-1/4"
- Automatic Engage/Disengage



Transport 55 gallon steel drums from work area to work area with this heavy duty Drum Controller. This unit lifts drums off the ground 2-1/4" with minimal effort (all this is done without straps or ratchet). Center the arms around the drum and pull the handle down. Overall height 62-13/16".

Model Number	Maximum Lift Height	Caster Style
DC-550	2-1/4"	8" x 2" Phenolic

# PORTABLE DRUM JACK

DRUM



Model **DRUM-55-36** allows the operator to easily lift a drum with the manual foot pump. Easy, safe transport of the drum from one location to another. Front wheels are 6" x 2". Rear casters are 3" x 1-1/2". Grips 30 and 55 gallon plastic, steel and fiber drums with a top lip.

Model Number	Maximum Lift Height	Capacity (pounds)	Overall Size (W x L x H)
DRUM-55-36	61"	500	32" x 29" x 57-1/2"

# PORTABLE DRUM JACKS

DRUM

The Drum Jacks, models **DRUM-55FP** and **DRUM-55S**, are the perfect solution to any of your drum transporting needs. Compact design allows for maximum maneuverability in restrictive areas. Constructed of steel with capacities up to 1,000 lbs. The unique pallet jack handle design allows quick and familiar operation.

Model **DRUM-55FP** has an adjustable beak design which allows it to grab just about any drum - 30 & 55 gallon steel, plastic or fiber drums. With a 20 inch vertical lift, drums can be placed or removed from pallets, spill containers and scales.

Model Number	Lift Height	Capacity (pounds)	Overall Size (W x L x H)
DRUM-55-FP	20"	1,000	43-1/2" x 39" x 48"

Model **DRUM-55S** has a unique grapple system which grasps the drum securely into the steel saddle prior to lifting it vertically. The drum is held in this position during transport, enabling open drums to be handled without spillage. Moving up and down ramps is now safe and easy. Quick and easy drum handling without using a dolly.

Model Number	Lift Height	Capacity (pounds)	Overall Size (W x L x H)
DRUM-55S	5"	1,000	29" x 41" x 48"



DRUM-55FP



DRUM-55S

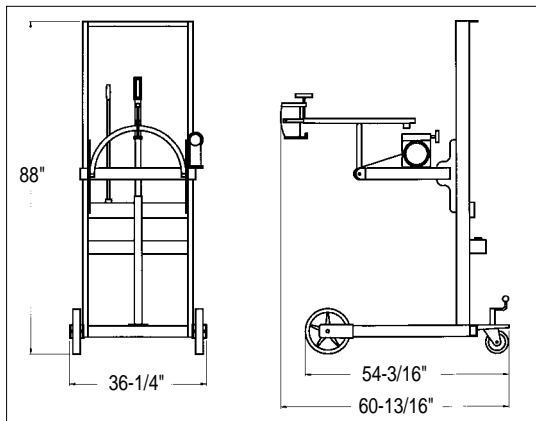
# DRUM LIFTER/ROTATOR/TRANSPORTER

DRUM-LRT

## Lift, Rotate and Transport 55 Gallon Steel Drums

The multifunctional unit, model **DRUM-LRT**, has a hand pump that lifts drums from ground level to a raised height of 68", bottom of drum in horizontal position. A gear mechanism will provide a controlled rotation for the drum. A floor lock is standard to stabilize the unit in a fixed position.

Model **DRUM-LRT-DC**, has a 12V DC battery powered lift operation and a gear mechanism rotation.



DRUM-LRT-DC  
(12V DC Battery Lift)



DRUM-LRT  
(Hand Pump Lift)

Model Number	Lift Operation	Lift* Height	Capacity (pounds)
DRUM-LRT	Hand Pump	68"	550
DRUM-LRT-DC	12V DC Battery	64"	550

\*Lift height is based on bottom of drum in horizontal position



# LO-PROFILE DRUM CADDIES

LO-DC

- Utilize Caddies To Transport (1) 55 or 30 Gallon Drum or (2) 5 Gallon Pails
- Reduce Injuries Caused By Lifting & Carrying Drums

Lo-Profile Drum Caddies roll easily on two 6" x 2" rigid wheels and one 3" x 1" swivel caster. Straddle width measures 26" and the depth is 16" (ID). Cradle height is 1/2". Handles capacities up to 1,200 lbs.



Handle features a Bung Nut Wrench and Seal Remover



**STEP ONE**  
Align unit in front of drum, remove handle, grip drum with the handle



**STEP TWO**  
Tip drum up while guiding the base under the drum.



**STEP THREE**  
Reattach handle and transport drum to desired location.



Model Number	Cradle Height	Capacity (pounds)	Wheel Type
LO-DC-MR	1/2"	1,000	Mold-On-Rubber
LO-DC-CI	1/2"	1,200	Steel
LO-DC-PU	1/2"	1,200	Poly-on-Steel

## BARREL / DRUM TRUCKS

### DBT-1200

The Barrel/Drum Truck, model **DBT-1200**, handles 30 and 55 gallon steel and fiber drums that are 24" to 48" high. Adjustable chime hook helps to secure the load. Kickstand holds truck upright when not in use. Wheels measure 10" x 2-1/2". Capacity is 1,200 lbs.

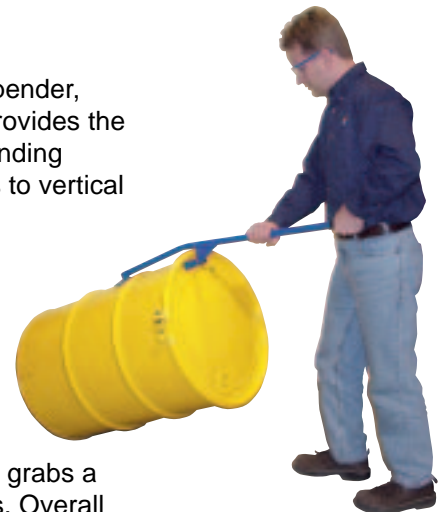


Model Number	Acceptable Drum Type	Overall Size (W x L)	Wheel Type
DBT-1200	30 & 55 Gallon	24-1/2" x 60"	Mold-On-Rubber
DBT-1200-P	55 Gallon	24-1/2" x 60"	Poly-on-Steel

## MANUAL DRUM UPENDER

### DTP-11

Manual Drum Upender, model **DTP-11**, provides the leverage for upending horizontal drums to vertical position. Constructed of solid steel for long life. Wide toeplate prevents denting on barrel sides. Narrow top plate grabs a variety of chimes. Overall length is 40". Blue powder coat finish.



Model Number	Description	Length
DTP-11	Upender for Horizontal Drum	40"

# STEEL RETENTION BASINS

RTB

- Capacities 800 to 1,600 lbs. - 66 gallons
- Stand Sloped at 5°
- Meets RCRA\*
- Removable Steel Grating
- Holds Up to (2) 55-Gallon Steel Drums
- Meets Uniform Fire Code (UFC 8003)

Transfer 55-gallon steel drums from area to area, and then empty the drums with this nonflammable Retention Basin Cart. The drum cradle cart has a 5° slope for thoroughly emptying drums. This unit is constructed of resist extreme heating environments.

Portability is made easy with the 2 swivel and 2 rigid polyurethane casters. A push handle is located at one end for easy maneuverability.

Model Number	Description	Volume Capacity	Capacity (pounds)	Overall Size (W x L x H)
RTB-C-1	Vertical (1) Drum Storage	66 Gal.	800	25" x 25" x 37-1/2"
RTB-C-2	Vertical (2) Drum Storage	66 Gal.	1,600	25" x 49" x 37-1/2"
RTB-C-1-DS	Horizontal (1) Drum Stand	66 Gal.	800	25" x 49" x 37-1/2"

- Capacities 800 to 3,200 lbs. - 66 gallons
- Built In Fork Pockets
- Removable Steel Grating
- Holds Up to (4) 55-Gallon Steel Drums
- Meets RCRA\*
- Meets Uniform Fire Code (UFC 8003)

Empty or store 55-gallon steel drums with this nonflammable heavy-duty Horizontal Steel Retention Basin. This unit is constructed to resist extreme heating environments. The rugged steel construction provides durability and repairability. Portability is made easy with the built in fork pockets. Units have a 5° slope for thoroughly emptying drums.

Model Number	Description	Volume Capacity	Capacity (pounds)	Overall Size (W x L x H)
RTB-1-DS	(1) Drum Style	66 Gal.	800	25" x 49" x 29"
RTB-2-DS	(2) Drum Style	66 Gal.	1,600	54" x 54" x 29"
RTB-4-DS	(4) Drum Style	66 Gal.	3,200	54" x 54" x 63"

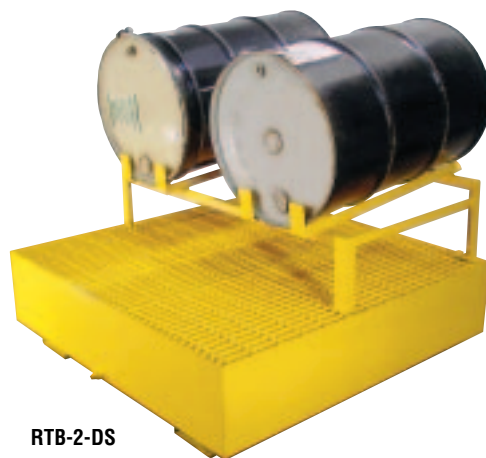
- Capacities Up to 800 lbs. - 66 gallons
- Built In Fork Pockets
- Stackable Shelves
- Holds Up to (4) 55-Gallon Steel Drums
- Meets RCRA\*
- Meets Uniform Fire Code (UFC 8003)

Store 55-gallon steel drums in the vertical position with these new nonflammable heavy-duty Drum Basins. The basin is constructed of resist extreme heating environments. The rugged steel construction provides durability and repairability. Portability is made easy with the built-in fork pockets. This stand is also stackable to provide more space in a warehouse or storage area.

Model Number	Description	Volume Capacity	Capacity (pounds)	Overall Size (W x L x H)
RTB-V-1	(1) Drum Style	66 Gal.	800	25" x 25" x 18"
RTB-V-2	(2) Drum Style	66 Gal.	1,600	25" x 49" x 18"
RTB-V-4	(4) Drum Style	66 Gal.	3,200	54" x 54" x 15"



RTB-C-1-DS



RTB-2-DS

# CHAIN DRUM LIFTER

CDL-2000

- 2,000 lbs. Capacity
- Allows for Easy Lift & Transporting Operations

The Overhead Chain Drum Lifter is made from grade 80 chain for OSHA & ANSI compliance. Easy to use design. Drum grips include spring-loaded latch for positive drum grip. For use with closed head plastic, steel and fiber 30 and 55 gallon drums with a top lip.

Model Number	Acceptable Drum Type	Capacity (pounds)
CDL-2000	Closed Head Plastic, Steel & Fiber	2,000

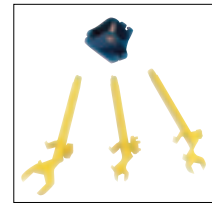


# MULTI-PURPOSE OVERHEAD DRUM LIFTER/WRENCH

PDL-800-M

- Simple Design is Easy to Use
- Completely Mechanical Operation

Simple three-arm design for use with closed head 30 and 55 gallon plastic, steel and fiber drums with top lip. Each removable arm also functions as a wrench for use on drum plugs, faucets and rim ring bolts. Durable powder coat finish.



Patent Pending

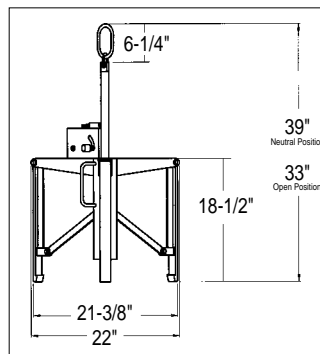


Model Number	Acceptable Drum Type	Capacity (pounds)
PDL-800-M	55 Gallon Plastic, Fiber & Steel Drums	800

# AUTOMATIC PLASTIC DRUM LIFTER

PDL-800

Designed to handle 55 gallon plastic drums, as well as traditional steel drums. Automatic secure and release eccentric lock makes this drum handler a real time saver. Includes adjustable positioning feature for increased adaptability. Capacity is 800 lbs.



Model Number	Acceptable Drum Type	Capacity (pounds)
PDL-800	55 Gallon Plastic & Steel	800



# DRUM CLUTCHERS

DCL

The Drum Clutcher allows easy lifting and transporting of steel drums with an overhead lifting chain or hoist. The Drum Clutcher is ideal for placing drums in secondary containment and salvage drums. The DCL series is designed for steel drums with a top lip or chime. Not for use with open head drums.

Model Number	Acceptable Drum Type	Capacity (pounds)
DCL-550	30 Gallon Steel Drums	1,000
DCL-1000	55 Gallon Steel Drums	1,000



# VERTICAL DRUM LIFTER

VDL-22.5

The Vertical Drum Lifter provides easy lifting and transporting of drums. Made of solid steel construction the model **VDL-22.5** has a capacity of 1,000 lbs. Simply lower unit onto the drum and as the lifter is elevated the positive gripping pads secure the drum. When the drum is set down, the model carriage drops down, locking itself in an open position, ready for another drum. Use on 55 gallon steel drums with a top lip or chime. Not for use with open head drums.

Model Number	Acceptable Drum Type	Capacity (pounds)
VDL-22.5	55 Gallon Steel Drum	1,000



## DRUM LIFTER & DRUM TOTE

DL-31 & FDT-22

The Drum Lifter model **DL-31** may be used to lift 30 and 55 gallon steel drums with either an overhead chain or forklift. Overhead opening measures 4"W x 2"H.

The Drum Tote model **FDT-22** may be used to lift both 30 and 55 gallon steel drums with either an overhead chain or hoist. This unique lifting system holds drums securely with a ratchet safety locking handle.

Model Number	Acceptable Drum Type	Operation Method	Capacity (pounds)
DL-31	55 and 30 Gallon Steel Drum	Fork or Chain	1,500
FDT-22	55 and 30 Gallon Steel Drum	Chain	1,000



DL-31



FDT-22

## CRANE / HOIST DRUM LIFTERS

CHDL

The Crane/Hoist Drum Lifter has an automatic mechanical operation. This drum lifter is great for handling drums in and out of overpacks. Constructed from solid steel with spring loaded arms for safety. Overall dimensions are 16"W x 9-1/2"L x 21-1/2".

Drums weighing over 500 lbs. must have top lid secured before lifting.

Model Number	Acceptable Drum Type	Accommodates Drum Diameter	Capacity (pounds)
CHDL-1620	Steel, Poly or Fiber Drums	16" to 20"	1,000
CHDL-2025	Steel, Poly or Fiber Drums	20" to 25"	1,000



## DRUM SLINGS

DCS

Lift drums in the horizontal position quickly and easily with these Drum Slings. Handle open or closed head steel drums. The large steel lifting ring accommodates most overhead lifting systems. Choose from brass, iron or galvanized iron. Capacities available from 750 lbs. to 2,000 lbs. Accepts 55 and 30 gallon steel drums.

Model Number	Acceptable Drum Type	Style	Capacity (pounds)
DCS-750-B	55 & 30 Gallon Steel	Brass	750
DCS-1000-I	55 & 30 Gallon Steel	Iron	1,000
DCS-2000-G	55 & 30 Gallon Steel	Galvanized	2,000



## DRUM TIERS

DTR

- Reduce Inventory by Stacking
- Light Weight Design Facilitates One Person Operation
- Handles Steel Drums up to (5) Units High

This economical Drum Tier, series **DTR**, is designed to help maximize floor space in a safe and convenient manner.

Model Number	Acceptable Drum Type	Overall Diameter
DTR-20	30 Gallon Drums	20"
DTR-24	55 Gallon Drums	24"
DTR-28	85 Gallon Drums	28"





## QUAD & TRI MULTI-PURPOSE DOLLIES

### DRUM-TRI & DRUM-QUAD

Transport a 5-gallon pail, 30 or 55-gallon drums or LP gas tank with the Multi-Purpose "Quad" Drum Dolly, series **DRUM-QUAD**. Available with hard rubber or cast iron casters with capacities from 900 to 1,200 pounds. These dollies have a high polished zinc finish for corrosion resistance. Stainless steel finish available, model **DRUM-QUAD-CS-SS**.

The Tri-Dolly, series **DRUM-TRI**, will transport 5-gallon pail, 30-gallon drum or LP gas tank.



Accommodates a variety of container sizes.



A standard 4 foot long nylon pull strap helps in transporting down aisles or over thresh holds. Store when not in use

Model Number	Acceptable Styles	Caster Style	Capacity (pounds)
DRUM-QUAD-H	5 Gal. Pails, 30 & 55 Gal. Drums, LP Tanks	Hard Rubber	900
DRUM-QUAD-C	5 Gal. Pails, 30 & 55 Gal. Drums, LP Tanks	Cast Iron	1,200
DRUM-TRI-H	5 Gal. Pails, 30 Gal. Drums, LP Tanks	Hard Rubber	900
DRUM-TRI-C	5 Gal. Pails, 30 Gal. Drums, LP Tanks	Cast Iron	1,200

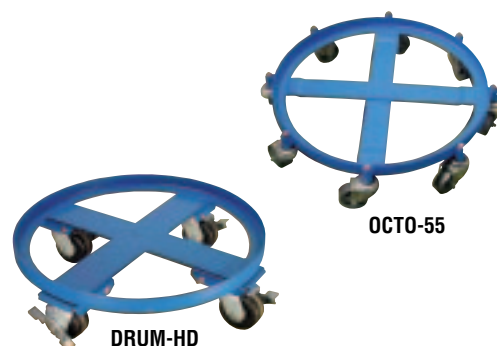
## OCTO & HEAVY DUTY DRUM DOLLIES

### OCTO & DRUM-HD

The Octo Drum Dolly, model **OCTO-55**, will transport 55-gallon drums weighing up to 2,000 pounds. This drum dolly has (8) cast iron swivel casters to move the dolly smoothly.

Transport 55-gallon drums with the Heavy-Duty Drum Dolly, model **DRUM-HD**. With a capacity of 2,000 lbs., this dolly will transport your heavier drums from location to location. (4) locking swivel phenolic casters standard.

Model Number	Description	Capacity (pounds)	Caster Style
OCTO-55	Octo Dolly	2,000	Cast Iron
DRUM-HD	Heavy Duty Dolly	2,000	Phenolic



## OVERPACK DRUM DOLLIES & CONTAINERS

### DRUM-SP & SCC

Transport containment units from location to location with these Overpack Drum Dollies, series **DRUM-SP**. Designed to hold drum spill containers weighing up to 1,200 pounds, these dollies roll easily and smoothly.

The Containment Units, model **SSC-55**, are specially designed to contain leaks and spills from 55-gallon drums during plant transport and storage. Either a fork truck or Overpack Drum Dolly can transport the Containment Units.

#### OVERPACK DRUM DOLLIES

Model Number	Description	Diameter	Caster Type	Capacity (pounds)
DRUM-SP-32-12-C	Dolly	32"	Steel	1,200
DRUM-SP-32-9-H	Dolly	32"	Hard Rubber	900
DRUM-SP-28-12-C	Dolly	27-1/2"	Steel	1,200
DRUM-SP-28-9-H	Dolly	27-1/2"	Hard Rubber	900

#### OVERPACK CONTAINER

Model Number	Description	Volume Capacity	Capacity (pounds)	Overall Size (W x H)
SCC-55	Container	55 Gallon	900	30-1/4" x 26"
SCC-CVR	Cover / Lid			33" x 17"



# POLYETHYLENE DRUM DOLLIES

DRUM-P

Manufactured from high impact strength polyethylene, these drum dollies are perfect for the everyday abuse associated with moving drums from place to place. Dollies come standard with (4) 3" swivel poly casters, and are suited for both indoor and outdoor applications.

Model Number	Acceptable Drum Types	Diameter	Caster Type	Capacity (pounds)
DRUM-P-30	30 Gallon	20"	Polyurethane	600
DRUM-P-35	55 Gallon	24"	Polyurethane	600



# MOBILE DRUM DOLLIES

DRUM & DDO

Transport ordinary or specialty styled drums easily with the multipurpose Drum Dollies.



A) DDO-P103



B) DRUM-SS



C) DRUM-DRH-HR



D) DRUM-DR

Type	Model Number	Caster Size and Style	Acceptable Drum Types	Height	Capacity (pounds)
A	DDO-P103-HT3	1" x 3" Cast Iron / Hard Rubber	30 & 55 Gallon	4-1/2"	1,100
A	DDO-P103-SS3	1" x 3" Cast Iron / Semi-Steel	30 & 55 Gallon	4-1/2"	1,200
B	DRUM-SS-55-H	1-1/4" x 3" Stainless Steel / Hard Rubber	55 Gallon	6"	800
C	DRUM-DRH-HR	1-1/4" x 3" Steel with Handle / Hard Rubber	55 Gallon	6"	1,000
D	DRUM-DR-30-9-H	1-1/4" x 3" Steel / Hard Rubber	30 Gallon	5"	900
D	DRUM-DR-30-12-C	1-1/4" x 3" Steel / Cast Iron	55 Gallon	5"	1,200
D	DRUM-DR-55-9-H	1-1/4" x 3" Steel / Hard Rubber	30 Gallon	5"	900
D	DRUM-DR-55-12-C	1" x 3" Steel / Cast Iron	55 Gallon	5"	1,200
E	DDO-P105-SS3	1-1/4" x 3" Halo / Semi-Steel	55 Gallon	4-1/2"	750



E) DDO-P105-SS3

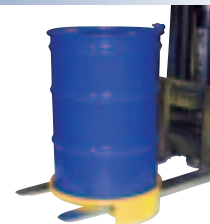
# DRUM STANDS

DRUM-ST

Drum Stands provide economical convenient portability. These stands offer a unique design understructure that allows for transporting of drums with either a pallet truck or forklift. Fork tine lock tabs minimize the possibility of the drum stands accidentally tipping while being transported with a forklift.

The Drum Stand also allows for single drum stacking for easy storage of drums up to three high (empty stands are nestable and stackable). Capacity is 1,500 lbs. with welded steel construction. Stands are finished with a safety yellow powder coat finish.

Model Number	Acceptable Drum Type	Capacity (pounds)
DRUM-ST	30 & 55 Gallon Plastic, Steel and Fiber Drums	1,500



Transport with Fork or Pallet Truck



## DISPENSING DRUM CARTS

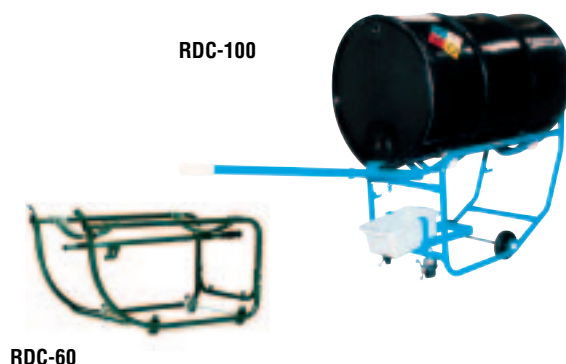
RDC

The **RDC-100** and **RDC-60** are the most versatile carts for dispensing drum contents. One person can easily load the Drum Cart.

The **RDC-100** is equipped with rollers for mixing and a built in drip pan to provide a clean safe work floor. Rolls on two 3" swivel casters and two 5" rigid casters.

The **RDC-60** ships knock down via parcel carrier. Rolls on 2-1/2" x 1-1/4" cast aluminum wheels.

Model Number	Description	Overall Size (W x L x H)	Capacity (pounds)
RDC-100	Revolving Drum Cart/Dispenser	21" x 37" x 25"	1,000
RDC-60	Drum Dispenser	20" x 35" x 17"	600



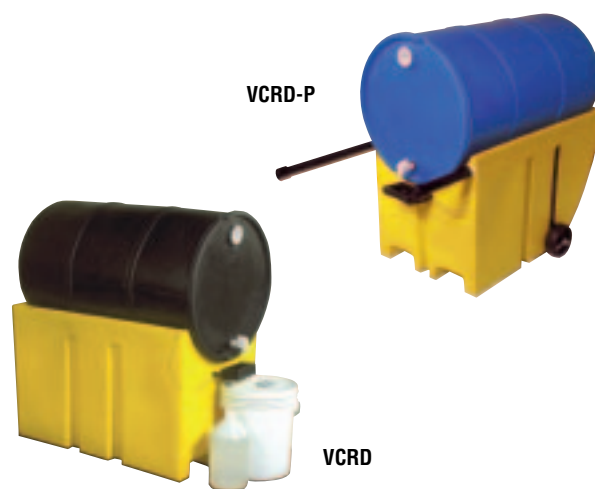
## DRUM CRADLES

VCRD

Dispense liquids from drums into smaller containers and avoid messy cleanups with our Poly Drum Cradles. Our horizontal drum cradle collection systems captures all spills and leaks of your liquids and stores them in the interior of the hollow cradle for reuse or safe, clean disposal. 2" NPT drain plug standard. Fork entry measures 6" x 3". Made from 100% virgin polyethylene.

Portable Drum Cradle, model **VCRD-P** features retractable handles for tilting and positioning drums, round contoured lower back for ease of loading drums from a vertical position, and 6" x 2" polyolfan wheels.

Model Number	Overall Size (W x L x H)	Sump Capacity	Capacity (pounds)
VCRD	22-1/2" x 35" x 23-1/4"	41 Gallon	600
VCRD-P	30" x 42" x 24-1/2"	30 Gallon	600



## DRUM PALLETS / SPILL CONTAINMENT

DRUM-4848, VLPDP, DRSP

Help eliminate costly clean up. Sturdy platforms and pallets provide containment of hazardous chemicals at storage areas, transfer stations or waste collection stations.

Move drums from workstation to workstation with a fork truck or pallet truck, model **DRUM-4848**. Constructed from 100% polyethylene. Holds (4) 55 gallon drums. Features: 4-way entry, reversible and holes for drainage.

Low Profile Spill Decks are available in two sizes. Model **VLPDP-2448**, has a volume capacity of 9 gallons and the model, **VLPDP-4848** has an 18 gallon volume capacity. Manufactured from chemical resistant polyethylene. Standard with removable decking.

Drum Spill Pallets, series **DRSP**, are designed to contain spills and leaks from 55 gallon drums. They contain drips and spills from drum filling operations, spills and leakage during in-plant use and storage. Heavy duty long-lasting construction. Made from chemical resistant polyethylene.

Model Number	Description	Overall Size (W x L x H)	Capacity (pounds)
DRUM-4848	(4) Drum Pallet (pallet truck accessible)	48" x 48" x 6"	3,500
VLPDP-2448	(2) Low Profile Spill Deck	24" x 48" x 2-1/4"	1,600
VLPDP-4848	(4) Low Profile Spill Deck	48" x 48" x 2-1/4"	3,200
DRSP-2	(2) Drum Spill Pallets	28" x 55" x 17"	1,250
DRSP-4	(4) Drum Spill Pallets	54" x 54" x 14"	2,500



## DRUM TOPS

### TRASH-TOP & CAN-CAP

Drum Tops are steel covers which fit over 55 gallon drums used for recycling, model **CAN-CAP**, and general waste disposal, model **TRASH-TOP**. Features powder coated finish, in red, green or black (specify when ordering), with ultra violet stabilizer and screws for securing cover to drum. Model CAN-CAP includes a "CANS ONLY" decal. Units measure 24-1/2".

Model Number	Description	Disposal Opening	Color
TRASH-TOP	55 Gal. General Waste Top	8-1/2"H x 11-1/2"W	Red, Green or Black
CAN-CAP	55 Gal. Recycling Top	3-1/2"D	Blue



TRASH-TOP-R



CAN-CAP

## DRUM COVERS

### DC & VDC

Protect your drums from bung seepage and outdoor storage situations. Easy to use for years of reliable use.

Polyethylene covers simply lay on the top of the drum with the 3" side lip, rain water is kept out. This durable cover will allow other drums to be stacked on top of it. Overall height is 2-1/2".

Model Number	Description
DC-TP	Clear Plastic for 55 Gallon Closed Head Drums
DC-TPO	Plastic Cover for 55 Gallon Open Head Drums
DC-TPB	Black Plastic Cover for 55 Gallon Drums / Closed Head
VDC-30	Polyethylene Cover for 30 Gallon Drums / Open or Closed Head
VDC-55	Polyethylene Cover for 55 Gallon Drums / Open or Closed Head



VDC



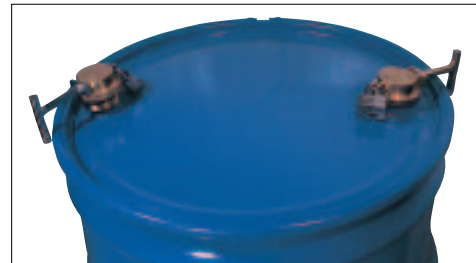
DC-TPO

## DRUM LOCKS

### BLD-80 & DTL-22

Prevent unauthorized access to drum contents. Simply screw drum lock into place, insert zinc-plated steel rod, and secure with padlock (padlock not included). Steel rod is predrilled with a 5/16" diameter padlock hole.

Model Number	Description	Thread Diameter
BLD-80	Brass Drum Lock with Steel Locking Rod	2" & 3/4"
DTL-22	Polycarbonate Drum Lock	



## DRUM DEHEADERS

### DD-9 & D-HEAD-1

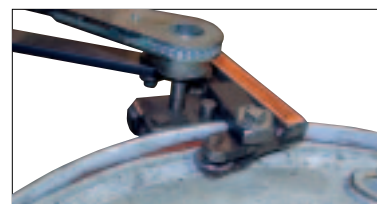
Convert your drums into storage containers with Drum Deheaders. The **DD-9** can be adjusted to open steel drums with different thicknesses. The blade is angled for maximum penetration and flattens the cut edge so there is no sharp or jagged edges. Replacement blades, model **DDB-1**.

Quickly remove the head of a steel drum in less than 30 seconds! Unique design, **D-HEAD-1**, similar to a household can-opener is very easy to use. Comfortable handle configuration allows for maximum operator comfort. Inside cutting blade does not leave a sharp edge on the drum. Replacement blades available separately, model **D-HEAD-1-B**.

Model Number	Description
DD-9	Drum Deheader
D-HEAD-1	Express-Open Drum Deheader



DD-9



D-HEAD-1



# DRUM BUNG SOCKET

BUNG-S

Open drum bungs easily! Designed to be used with standard socket wrenches (wrenches not included). Available in non-sparking bronze alloy or cast steel.

Model Number	Description	Drive Size	Bung Size
BUNG-S-B1	Non-Sparking Bronze Alloy	3/8"	3/4" and 2"
BUNG-S-B2	Non-Sparking Bronze Alloy	1/2"	3/4" and 2"
BUNG-S-S1	Bright Zinc Plated Cast Steel	3/8"	3/4" and 2"
BUNG-S-S2	Bright Zinc Plated Cast Steel	1/2"	3/4" and 2"
BUNG-S	Bright Zinc Plated Cast Steel	3/4"	3/4" and 2"



Tighten or Remove with a Ratcheting Wrench



Attaches Easily



Fits 2" Bungs



Fits 3/4" Bungs

# MULTI-PURPOSE DRUM WRENCHES (FOR BUNGS, FAUCETS & RINGS)

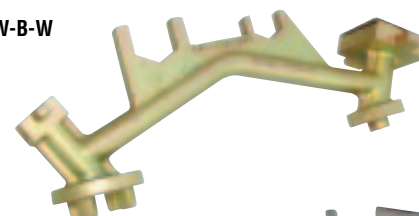
BNW

Specialty Bung Nut Wrenches are available in cast steel with polished zinc finish, non-sparking aluminum or non-sparking bronze alloy to meet many applications.

These multipurpose drum tools not only open and close drum bungs or plugs, they also work as a **bung wrench**, **ring wrench** and **faucet wrench** all in one! Wrenches are universal in which they fit all types of industrial drum plugs and bungs in metal or plastic. The angled handles on model **BNW-I-W** and **BNW-B-W** protect knuckles in most positions. Cast steel durability not bend, break or chip. Eliminate the need for extra tools with these multifunctional drum wrenches! Patent pending.

Model Number	Description	Overall Length
BNW-A	Non-Sparking Aluminum (Single Ended)	10-1/2"
BNW-I-W	Polished Zinc Cast Steel	12"
BNW-B-W	Non-Sparking Bronze Alloy	12"
BNW-IX-W	Polished Zinc Cast Steel	12"
BNW-BX-W	Non-Sparking Bronze Alloy	12"

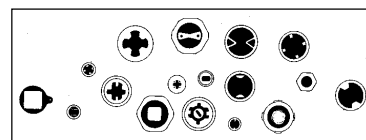
BNW-B-W



BNW-IX-W



BNW-A

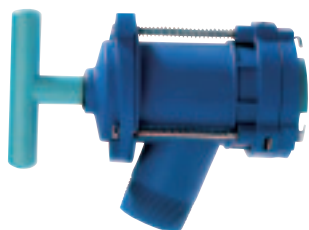


Fits a Variety of Socket Openings

# HORIZONTAL DRUM TAP

TAP-3

The **TAP-3** is the best way to empty or fill a drum while leaving it in the horizontal position. The Tappo Drum Dispenser saves time, energy, risk of spills and above all your back.



## Easy to Use Operation:

- 1) Insert Tappo into the large drum plug. Connect Tappo to drum by turning the lock ring to the right.
- 2) With the Tappo Drum Dispenser there is no risk of coming into contact with harmful fluids. Unscrew the drum plug cap by turning the handle to the left. You have complete control over the flow by moving handle towards you.
- 3) On completion of tapping: Screw in the drum plug with the handle and disconnect Tappo from the drum by turning the lock ring in the opposite direction.
- 4) Tappo also makes filling a drum simple. Just turn drum 180° so the spout is facing upwards.

# DRUM PUMP FUNNEL

DP-FUN

- Polyethylene Construction
- Fits 55 Gallon Drums
- 5 Gallon Capacity

Eliminate spills, drips and the need for absorbent pads on top of drums with this easy to use Drum Funnel. A 3/4" drain fits into one opening of your drum while the drum pump (sold separately) is installed into the opposite opening through the adjustable opening in the funnel.

Drum Pump (see page 18)



Drum Funnel model DP-FUN

# DRUM AND PAIL PUMPS

- A) Electric Pump: model **EDP** - 115 volt, fits 2" bungs
- B) Self-Venting Polypropylene Pump: model **VDP** - 8 oz. per stroke, fits 3/4" & 2" bungs  
Self-Venting Polypropylene Pump: model **VDPX** - 16 oz. per stroke, fits 3/4" & 2" bungs
- C) Polypropylene Pump: model **VLDP** - 10 oz. per stroke, fits 2" bungs
- D) Steel Rotary Pump: model **RDP-55** - 34 oz. per rotation, fits 2" bungs
- E) Aluminum Rotary Pump: model **ADP-55** - 34 oz. per rotation, fits 2" bungs
- F) Polypropylene Lever Action Pump: model **LDP-POLY** - 12 oz. per stroke, fits 2" bungs  
Polypropylene 316 SS Lever Action Pump: model **LDP-POLY-316** - 12 oz. per stroke, fits 2" bungs
- G) Ryton, 316 SS Rod Lever Action Pump: model **LDP-RYT** - 12 oz. per stroke, fits 2" bungs
- H) Steel, Lever Action: model **LDP-ST** - 12 oz. per stroke, fits 2" bungs
- I) 316 Stainless Steel Hand Pump: model **LDP-SS-316** - 16 oz. per stroke, fits 2" bungs
- J) Steel, Piston Pail Pump: model **PAIL-PST** - 8 oz. per stroke  
Stainless Steel, Piston Pail Pump: model **PAIL-PST-SS** - 8 oz. per stroke

## THE FOLLOWING MOTORS AND TUBES ARE SOLD AS SEPARATE COMPONENTS

- K) 0.85 HP Electric Pump Motor: model **LEP-85-VS** - open drip proof style, variable speed, 115V, 16' long cord and plug  
0.85 HP Electric Pump Motor: model **LEP-85-SS** - open drip proof style, single speed, 115V, 16' long cord and plug
- L) 1 HP Electric Pump Motor: model **LEP-1-SS** - open drip proof style, single speed, 115V, 16' long cord and plug
- M) Polypropylene Pump Tube with Hastelloy C Drive Shaft: model **LPT-P-39-HC** - multipurpose seal-less, 39" long  
Polypropylene Pump Tube with Stainless Steel Drive Shaft: model **LPT-P-39-SS** - multipurpose seal-less, 39" long
- N) Stainless Steel Pump Tube with Stainless Steel Drive Shaft: model **LPT-S-39-SS** - multipurpose seal-less, 39" long
- O) Polypropylene Mixing Pump Tube with Stainless Steel Drive Shaft: model **LMPT-P-39-SS**  
Allows for mixing and pumping of drum contents, 39" long, high head impeller



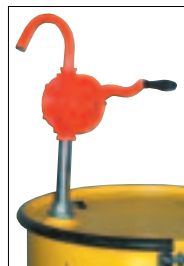
A) EDP



B) VDP



C) VLDP



D) RDP-55



E) ADP-55



F) LDP-POLY



G) LDP-RYT



H) LDP-ST



I) LDP-SS-316



J) PAIL-PST-SS



K) LEP-85-VS



L) LEP-1-SS



M) LPT-P-39-HC



N) LPT-S-39-SS



O) LMPT-P-39-SS

# DRUM BONNETS

DVC

## Protect Dispensing Equipment By Keeping Dirt & Water Off the Top of the Drum

The Drum Bonnet serves two purposes. It protects dispensing equipment by keeping dirt and water off the top of the drum and it prevents tampering and theft of equipment and contents. Drum Bonnet is secured to the top of your 55 gallon drum and can be locked when not in use (padlock not included).

Model Number	Drum Type Accepts	Features
DCVR	55 Gallon Closed Head Drums	Lockable Sliding Door
DCVK	55 Gallon Open Head Drums	Lockable Sliding Door



# DRUM FAUCETS & VENT

- A) Polyethylene Faucet: **VDFT** - Fits 3/4" openings
- B) Stainless Steel Faucet: **DFT-SS** - Fits 3/4" openings
- C) Aluminum Faucet: **DFT-AL** - Fits 3/4" openings  
Aluminum Faucet w/Screen: **DFT-AS-SC** - Fits 3/4" openings  
Rigid Brass Faucet: **DFT-RIGID** - Fits 3/4" openings
- D) Virgin Polyethylene Jumbo Faucet: **JDFT** - Fits 2" openings  
Brass Jumbo Faucet: **JDFT-B** - Fits 2" openings
- E) Adjustable Brass Faucet: **DFT-ADJ** - Fits 3/4" openings
- F) The **VENT-B** opens manually or automatically at 5 p.s.i. May be used with flammable liquids. Utilize on plastic or steel drums. Fits horizontal drum with 2" bung opening.



A) VDFT  
3/4" opening



B) DFT-SS  
3/4" opening



C) DFT-AS-SC  
3/4" opening



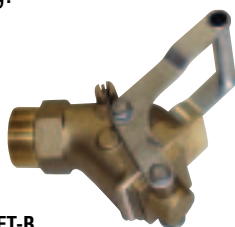
C) DFT-RIGID  
3/4" opening



D) JDFT  
2" opening



D) JDFT-B  
2" opening



E) DFT-ADJ  
3/4" opening



F) DFT-ADJ  
2" bung opening

# PORTABLE DRUM JACK

DRUM-55-FSP

- Reduce the Risk of Injuries Associated with Moving Drums
- Lifts Drums On/Off Pallets, Floor Scales, and Spill Pallets
- Drums remain Vertical - No Tipping
- Optional Scale Allows Operator to Quickly Check Drum Weight

A simple, safe and effective method that addresses the risks of manually lifting and lowering drums in the vertical position without a forklift. Easily picks up steel, poly and fiber drums, raising to a full 18". Eliminates strained backs, pinched fingers and the risk of serious injuries caused by manhandling drums.



Model Number	Description	Overall Size (W x L x H)	Capacity (pounds)
DRUM-55-FSP	55 Gallon Steel, Poly or Fiber	39-1/2" x 35" x 18"	800

# FORK MOUNTED DRUM LIFTER

FMDL & FMDDL

Lift truck attachments utilize a light duty single automatic clamping mechanism for handling any size steel or plastic chimed drum.

**FMDL-850** is a knockdown unit that bolts together. Fork pockets and safety chain provide a quick and easy installation to most all lift trucks.

**FMDDL-1700** attaches to the carriage of most lift trucks and walkie stackers.

These fork mounted drum lifters enable lift truck operators to install or remove the attachment in seconds without any tools. Totally enclosed fork pockets with attached safety chain and cam lock secures the attachment to the lift truck. The clamping mechanism is completely mechanical requiring no hydraulic or electrical connections. Quick adjustable heads allow pickup of various drum heights. Standard belt bases support the lower side of the drum eliminating dents or cosmetic marring.

## FMDL-1500 & FMDDL-3000

Lift truck attachments utilize a heavy duty single automatic clamping mechanism for handling steel, fiber and plastic chimed drums in high volume applications.

Positive action jaws insure safe transporting of drums without damage to drum chimes.

Attachments handling (2) 55-gallon drums, FMDDL-3000, are narrower than the width of the drums themselves. This makes easy unloading of drums that are tightly packed in trailers.

## FMDL-2000 & FMDDL-4000

Incorporates heavy-duty double articulating clamping mechanisms for handling any steel, plastic or fiber chimed drums in high volume applications.

Each drum is gripped with two upper and lower jaws in heads that are spaced about 6 inches apart. The swivel action is operator friendly permitting pickup of misaligned or slightly separated drums. Recommended when handling fiber and plastic drums in excess of 600 lbs. and light gauge open head steel drums.



FMDL-850



FMDL-1500



FMDDL-3000



FMDL-2000



FMDDL-4000

Model Number	Acceptable Drum Types	Capacity (pounds)	Overall Size (W x L x H)
FMDL-850*	(1) Steel, Poly or Fiber	750	31" x 30-1/2" x 37"
FMDL-1500	(1) Steel, Poly or Fiber	1,500	30" x 31" x 39"
FMDL-2000	(1) Steel, Poly or Fiber	2,000	33" x 45" x 39"
FMDDL-1700*	(2) Steel, Poly or Fiber	1,500	37-1/2" x 33" x 57"
FMDDL-3000	(2) Steel, Poly or Fiber	3,000	40" x 31" x 39"
FMDDL-4000	(2) Steel, Poly or Fiber	4,000	40" x 45" x 39"

\*LIGHT DUTY UNIT TO HANDLE 100 OR FEWER DRUMS PER MONTH  
ALL MODELS ARE AVAILABLE WITH BELT BASE AND NON-SPARKING JAWS FOR HANDLING FLAMMABLES.

DISTRIBUTED BY: